

SUNICE LADIES ELEMENT SHIELD PERFORMANCE 1/4-ZIP PULLOVER



Item#: S77525

Description :

Product Description:

This highly breathable performance pullover features our SuperliteFX™ ultimate lightweight layering system. Ideal for windy, cool conditions, and achieves the highest degree of lightweight stretch comfort while ensuring thermoregulation, so your body is always at the right temperature. Contrast flatlock stitching makes a stylish, form-flattering statement. Includes an invisible left side pocket, plus UV 50+ protection.

Thermal- consistently keeps the body at a comfortable temperature.

Breathable- wicks moisture to keep you dry inside and out.

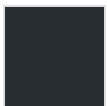
Wind Protection- uses fine yarns to trap air and block wind.

- KNIT: 89% Polyester, 11% Spandex
- Element Shield™ ultimate lightweight layering system
- Machine wash
- Imported

Order Notes:

- Stock product is not returnable.

Colors



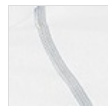
BLACK/
CHARCOAL



MIDNIGHT/
PURE WHITE



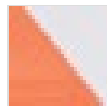
OYSTER/ PURE
WHITE



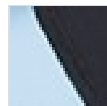
PURE WHITE/
OYSTER



PINK/ PURE
WHITE



LIVING CORAL/
PURE WHITE



BLUE BELL/
BLACK

Sizes

Size*	<input type="button" value="XS"/>	<input type="button" value="Small"/>	<input type="button" value="Medium"/>	<input type="button" value="Large"/>	<input type="button" value="X-Large"/>	<input type="button" value="XX-Large"/>
-------	-----------------------------------	--------------------------------------	---------------------------------------	--------------------------------------	--	---

Production Details

Production Time	1-2 Business Days
FOB	OMAHA, Nebraska, 68103

Imprint Details

Pricing Includes	0 / 0
Primary Imprint Area	0 0

Images



Oyster/Pure White (S77525-8404)



Midnight/Pure White (S77525-3104)



Pure White/Oyster (S77525-0484)



Blue Bell/Black (S77525-3302)



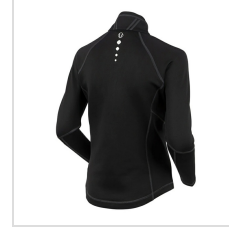
Living Coral/Pure White (S77525-2604)



Pink/Pure White (S77525-6504)



Black/Charcoal (S77525-0285)



Black/Charcoal (S77525-0285)