



MEN'S  
GOLF  
SPRING  
SUMMER  
2023





## TABLE OF CONTENTS

### 03 - 26 COLLECTIONS

Collection 1

Collection 2

Collection 3

### 27 - 30 POLOS

### 31 - 34 LAYERING & OUTERWEAR

### 35 - 38 BOTTOMS

### 39 - 40 TOURNAMENT & STAFF

### 41 - 42 TEE & HOODIE

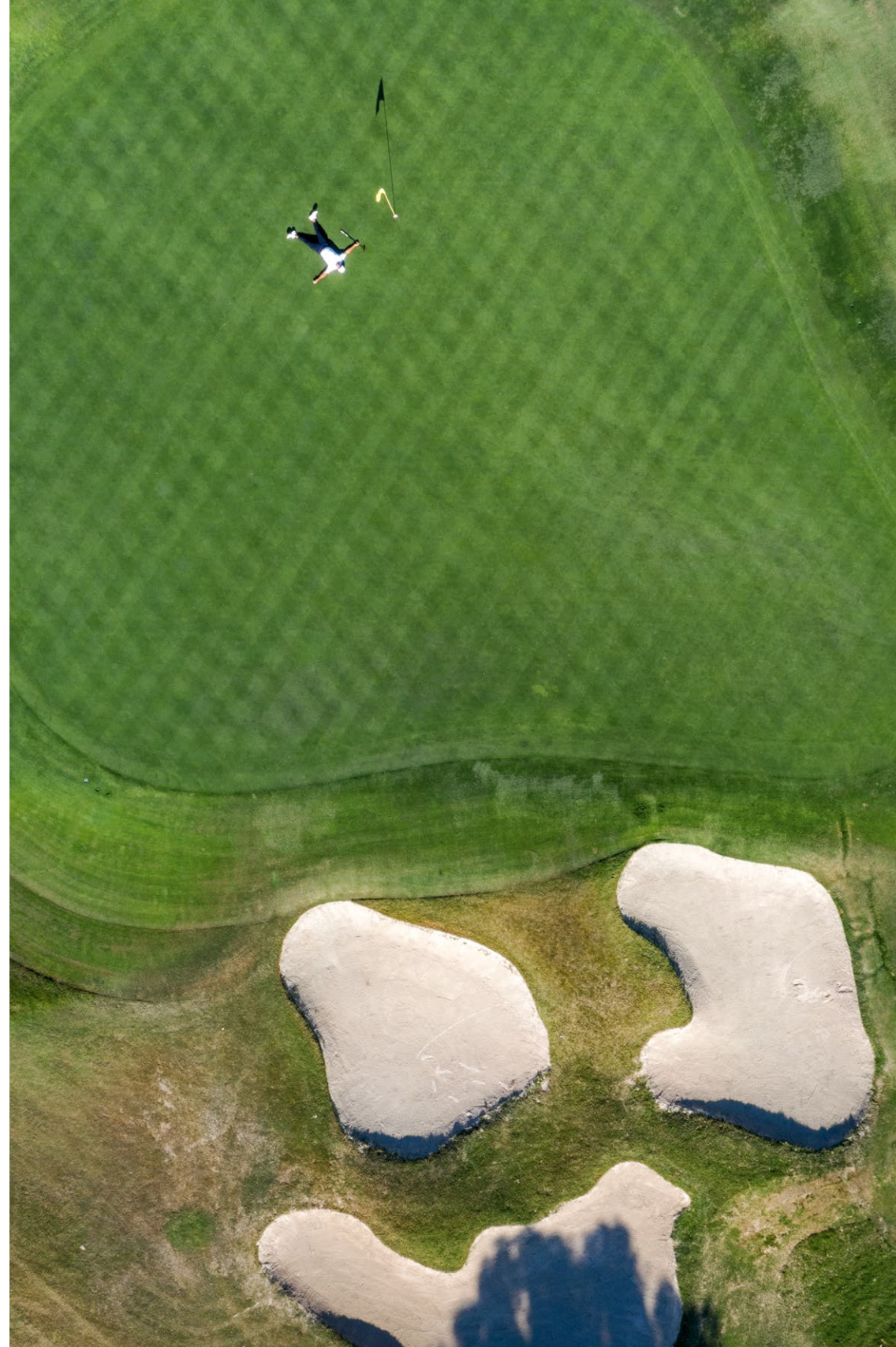
### 43 - 48 YOUTH

### 49 - 56 FOOTWEAR

### 57 - 67 ACCESSORIES

### 68 - 70 SIZE CHARTS

**CUSTOMER SERVICE: 833.234.4653 (833.ADI.GOLF)**







## READY COLLECTION OF TECHNOLOGIES

### HEAT.RDY

#### READY FOR THE HEAT

##### **KEEP COOL**

Our cooling technology keeps you feeling cool, dry and confident in the game.

### COLD.RDY

#### READY FOR THE COLD

##### **STAY WARM**

Our insulation technology keeps you feeling warm and confident when it's cold outside.

### RAIN.RDY

#### READY FOR THE RAIN

##### **STAY DRY**

Our waterproof technology keeps the wet out so you feel dry and confident when you play.

### WIND.RDY

#### READY FOR THE WIND

##### **GET SHELTERED**

Our wind-resistant technology keeps the wind out so you feel protected and confident.

### AEROREADY

#### READY FOR ANYTHING

##### **FEEL READY**

Our sweat-wicking technology keeps your skin dry and comfortable to keep you performing at your best.





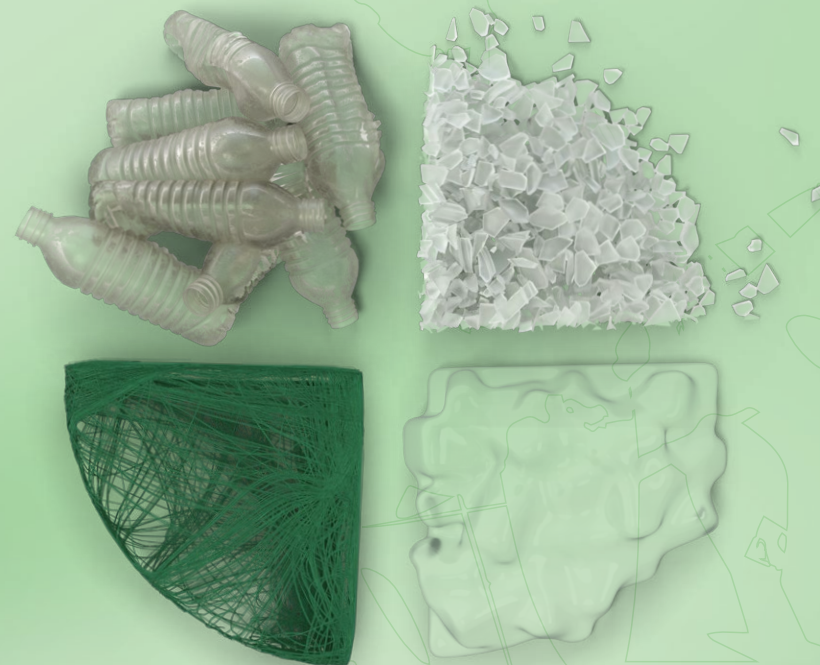
# PRIMEBLUE

MADE WITH PARLEY OCEAN PLASTIC

## MAKE A CHOICE THAT MAKES A DIFFERENCE TO OUR OCEANS

THE WORLD HAS A PROBLEM. WITH POLLUTION. WITH PLASTIC WASTE. PRIMEBLUE, WHILE NOT THE ONLY SOLUTION, IS ONE INNOVATION THAT'S HELPING US CHANGE OUR GLOBAL ENVIRONMENTAL FOOTPRINT.

THIS RECYCLED HIGH-PERFORMANCE MATERIAL, MADE IN PART WITH PARLEY OCEAN PLASTIC, IS JUST PART OF OUR COMMITMENT TO CONTINUE TO INNOVATE IN THE AREA OF SUSTAINABILITY UNTIL WE REACH OUR GOAL OF BEING COMPLETELY OFF OF VIRGIN POLYESTER BY 2024.



# PRIMEGREEN

MADE WITH RECYCLED MATERIALS

## MAKE A CHOICE THAT MAKES A DIFFERENCE TO OUR PLANET

ALMOST EVERY PIECE OF PLASTIC EVER MADE IS STILL IN EXISTENCE SOMEWHERE. THIS IS A PROBLEM.

OUR RELIANCE ON VIRGIN POLYESTER MEANS WE'RE ON A MISSION TO FIND SOLUTIONS. PRIMEGREEN IS ONE OF THEM. MADE FROM RECYCLED INGREDIENTS, PRIMEGREEN IS A SERIES OF HIGH PERFORMANCE MATERIALS THAT ARE CHANGING HOW WE MAKE OUR PRODUCTS, GIVING YOU A MORE SUSTAINABLE CHOICE.











ULTIMATE365 TOUR NO SHOW POLO

MSRP: \$95 TM1031S23 • Sizes: S-2XL • 100% recycled polyester doubleknit



GO-TO PIQUE POLO

MSRP: \$90 TM1029S23 • Sizes: S-2XL • 64% cotton, 36% recycled polyester doubleknit



FLOWER MESH POLO

MSRP: \$70 TM1020S23 • Sizes: S-2XL • 92% recycled polyester, 8% elastane mesh



ULTIMATE365 TOUR PRIMEKNIT POLO

MSRP: \$95 TM1032S23 • Sizes: S-2XL • adidas PRIMEKNIT 74% recycled polyester, 26% recycled nylon seamless



GO-TO STRIPE POLO

MSRP: \$80 TM1030S23 • Sizes: S-2XL • 74% recycled polyester, 19% cotton, 7% elastane single jersey



JACQUARD POLO

MSRP: \$70 TM1026S23 • Sizes: S-2XL • 78% recycled polyester, 22% recycled nylon



ULTIMATE365 TOUR MESH PRINT POLO

MSRP: \$95 TM1034S23 • Sizes: S-2XL • 89% recycled nylon, 11% elastane single jersey



GO-TO POLO

MSRP: \$75 TM1028S23 • Sizes: S-2XL • 74% recycled polyester, 19% cotton, 7% elastane single jersey



ULTIMATE365 ALLOVER PRINT POLO

MSRP: \$70 TM1016S23 • Sizes: S-3XL • 88% recycled polyester, 12% elastane single jersey





STRIPE ZIPPER POLO

MSRP: \$70    TM1022S23CF    • Sizes: S-2XL    • 88% recycled polyester, 12% elastane single jersey



IC1345  
lucid fuchsia/black

SPACE DYE POLO

MSRP: \$70    TM1024S23    • Sizes: S-2XL    • 89% recycled nylon, 11% elastane piqué



HS7606  
black

HS1122  
lucid fuchsia

TEXTURED JACQUARD POLO

MSRP: \$70    TM1027S23    • Sizes: S-3XL    • 100% recycled polyester raschel



HS1112  
lucid fuchsia/  
black

HS1113  
white/grey two

IB7489  
grey five/  
black

LONG SLEEVE POLO

MSRP: \$70    TM1012S23    • Sizes: S-2XL    • 88% recycled polyester, 12% elastane single jersey



HR8004  
black

TEXTURE STRIPE POLO

MSRP: \$65    TM1992F22    • Sizes: S-2XL    • 100% recycled polyester piqué



HR9068  
grey three/  
white

HR7392  
black/  
grey five

HR9070  
lucid fuchsia/white

OTTOMAN STRIPE POLO

MSRP: \$65    TM1969S22    • Sizes: S-3XL    • 93% recycled polyester, 7% elastane single jersey



HR9073  
lucid fuchsia/  
black

HA9165  
black/  
grey six

HA9167  
grey two/white

ULTIMATE365 SOLID POLO

MSRP: \$65    TM1860S21    • Sizes: S-3XL    • 88% recycled polyester, 12% elastane single jersey



GM0091  
black

GM0096  
white

ULTIMATE365 HEATHER POLO

MSRP: \$65    TM1862S21    • Sizes: S-3XL    • 44% polyester, 44% recycled polyester, 12% elastane single jersey



GM0089  
black  
melange

HR9078  
lucid fuchsia  
mel.

GM0271  
grey three mel.

TWO COLOR STRIPE POLO

MSRP: \$60    TM1010S23    • Sizes: S-2XL    • 100% recycled polyester piqué



HR7981  
black/grey  
four

HR7983  
grey three/  
white

HR8011  
black/lucid fuchsia



ULTIMATE365 TOUR STRETCH ANORAK QUARTER ZIP PULLOVER

MSRP: \$130 TM4505S23 • Sizes: S-2XL • 92% recycled nylon, 8% elastane plain weave



HS7582  
black

RIPSTOP QUARTER ZIP PULLOVER HOODIE

MSRP: \$110 TM4507S23CF • Sizes: S-2XL • 96% nylon, 4% elastane ripstop



HY5380  
black

3-STRIPES COLD.RDY HOODIE

MSRP: \$90 TM4473F22 • Sizes: S-2XL • 100% recycled polyester fleece



HI3847  
black

HF6510  
white

ELEVATED QUARTER ZIP PULLOVER

MSRP: \$90 TM4500S23CF • Sizes: S-3XL • 71% recycled polyester, 24% viscose, 5% elastane interlock



IB4536  
white

IA4759  
grey three

IB4537  
black

ELEVATED QUATERZIP PULLOVER VEST

MSRP: \$80 TM4501S23CF • Sizes: S-2XL • 71% recycled polyester, 24% viscose, 5% elastane interlock



IB4540  
white

IB4542  
black

MICRODOT QUARTER ZIP PULLOVER

MSRP: \$85 TM4506S23 • Sizes: S-2XL • 91% recycled polyester, 9% elastane doubleknit



IA4763  
white/grey three

DWR QUARTER ZIP

MSRP: \$80 TM4475F22 • Sizes: S-3XL • 100% recycled polyester doubleknit



HF6531  
black

CORE CREW NECK SWEATSHIRT

MSRP: \$75 TM4474F22 • Sizes: S-2XL • 74% recycled polyester, 26% viscose terry loop



HN4551  
black

HN4552  
grey three

3-STRIPES QUARTER ZIP SWEATSHIRT

MSRP: \$70 TM4410S21 • Sizes: S-3XL • 53% cotton, 47% recycled polyester doubleknit



GM0026  
black  
melange

GM0022  
grey three  
mel

HR9064  
lucid fuchsia mel.



UPF QUARTER ZIP PULLOVER

MSRP: \$65    TM4467S22    • Sizes: S-3XL    • 100% recycled polyester doubleknit



ULTIMATE365 TOUR NYLON TAPERED FIT GOLF PANT

MSRP: \$120    TM6506S23    • Sizes: 30-42    • 92% recycled nylon, 8% elastane plain weave



GO-TO 5-POCKET TAPERED FIT GOLF PANT

MSRP: \$100    TM6505S23    • Sizes: 28-44    • 56% cotton, 38% lyocell, 6% elastane twill



RIPSTOP GOLF PANT

MSRP: \$95    TM6502S23CF    • Sizes: S-2XL    • 96% nylon, 4% elastane ripstop



CROSSHATCH PANT

MSRP: \$90    TM6466S22    • Sizes: 30-42    • 69% recycled polyester, 20% cotton, 11% elastane plain weave



GO-TO COMMUTER PANT

MSRP: \$90    TM6467S22    • Sizes: 30-42    • 95% recycled nylon, 5% elastane twill



ULTIMATE365 REGULAR FIT GOLF PANT

MSRP: \$85    TM6471S22    • Sizes: 28-44    • 100% recycled polyester twill



ULTIMATE365 TAPERED FIT GOLF PANT

MSRP: \$85    TM6472S22    • Sizes: 28-44    • 100% recycled polyester twill





ULTIMATE365 TOUR NYLON 9 INCH GOLF SHORT

MSRP: \$95 TM6507S23 • Sizes: 30-42 • 92% recycled nylon, 8% elastane plain weave



HR7919  
black

TEXTURED 9 INCH GOLF SHORT

MSRP: \$80 TM6509S23 • Sizes: 30-42 • 88% recycled polyester, 12% elastane plain weave



HS7585  
black/lucid fuchsia

ULTIMATE365 8.5 INCH GOLF SHORT

MSRP: \$70 TM6512S23 • Sizes: 28-44 • 88% recycled polyester, 12% elastane plain weave



HR7939  
grey three

HR7940  
hemp

HR6793  
black

HR7941  
lucid fuchsia

GO-TO 9 INCH GOLF SHORT

MSRP: \$85 TM6503S23 • Sizes: 30-42 • 56% cotton, 38% lyocell, 6% elastane twill



HR7930  
black

HR7929  
white

IA4769  
clear brown

ULTIMATE365 PRINTED 9 INCH GOLF SHORT

MSRP: \$75 TM6500S23 • Sizes: 30-42 • 88% recycled polyester, 12% elastane plain weave



HR7937  
white/grey three

ULTIMATE365 10 INCH GOLF SHORT

MSRP: \$70 TM6511S23 • Sizes: 28-44 • 88% recycled polyester, 12% elastane plain weave



HR7946  
grey three

HR7951  
hemp

HR6794  
black

HR7947  
lucid fuchsia

RIPSTOP 9 INCH GOLF SHORT

MSRP: \$80 TM6508S23CF • Sizes: S-2XL • 96% nylon, 4% elastane ripstop



HY5374  
white

CROSSHATCH 9 INCH GOLF SHORT

MSRP: \$75 TM6464S22 • Sizes: 30-42 • 69% recycled polyester, 20% cotton, 11% elastane plain weave



HA1462  
black/white

HA6225  
grey three/  
white

HG8845  
hemp/white

HR9054  
lucid  
fuchsia/  
grey three











ULTIMATE365 TOUR TEXTURED PRIMEKNIT POLO

MSRP: \$95 TM1033S23 • Sizes: S-2XL • adidas PRIMEKNIT 74% recycled polyester, 26% recycled nylon seamless



HS7595  
white/collegiate navy

GO-TO CAMP GOLF SHIRT

MSRP: \$90 TM1035S23 • Sizes: S-2XL • 90% recycled polyester, 10% elastane seersucker



HR7967  
collegiate navy

GO-TO PIQUE POLO

MSRP: \$90 TM1029S23 • Sizes: S-2XL • 64% cotton, 36% recycled polyester doubleknit



HS7599  
blue down

HR7975  
collegiate navy

GO-TO PRINT POLO

MSRP: \$80 TM1025S23 • Sizes: S-2XL • 74% recycled polyester, 19% cotton, 7% elastane single jersey



HS1119  
blue down

GO-TO STRIPE POLO

MSRP: \$80 TM1030S23 • Sizes: S-2XL • 74% recycled polyester, 19% cotton, 7% elastane single jersey



HR7974  
collegiate navy

GO-TO POLO

MSRP: \$75 TM1028S23 • Sizes: S-2XL • 74% recycled polyester, 19% cotton, 7% elastane single jersey



HR7978  
white  
melange

HS1109  
blue down  
mel.

HR7977  
collegiate navy mel.

HEAT.RDY POLO

MSRP: \$80 TM1017S23 • Sizes: S-2XL • 100% recycled polyester doubleknit



HS1135  
blue fusion

HS1134  
collegiate navy

FLOWER MESH POLO

MSRP: \$70 TM1020S23 • Sizes: XS-XL • 92% recycled polyester, 8% elastane mesh



HS1129  
olive strata/  
black

HS1131  
white/  
collegiate  
navy

HS1128  
blue fusion/  
collegiate navy

STRIPE ZIPPER POLO

MSRP: \$70 TM1022S23CF • Sizes: S-2XL • 88% recycled polyester, 12% elastane single jersey



IC1348  
blue fusion/  
white

IC1346  
white/  
collegiate navy



JACQUARD POLO

MSRP: \$70    TM1026S23    • Sizes: S-2XL    • 78% recycled polyester, 22% recycled nylon



HS1116  
blue fusion/  
collegiate navy/  
lucid blue

HS1118  
hemp/  
black/  
olive strata

SPACE DYE POLO

MSRP: \$70    TM1024S23    • Sizes: S-2XL    • 89% recycled nylon, 11% elastane piqué



HS1121  
blue fusion

HS1123  
white

LONG SLEEVE POLO

MSRP: \$70    TM1012S23    • Sizes: S-2XL    • 88% recycled polyester, 12% elastane single jersey



HR8006  
blue fusion

ULTIMATE365 ALLOVER PRINT POLO

MSRP: \$70    TM1016S23    • Sizes: S-3XL    • 88% recycled polyester, 12% elastane single jersey



HR7910  
collegiate navy

HR7911  
white

HR7913  
blue fusion

TEXTURE STRIPE POLO

MSRP: \$65    TM1992F22    • Sizes: S-2XL    • 100% recycled polyester piqué



HF9045  
clear brown/white

HM8261  
collegiate  
navy/crew  
navy

HR9068  
grey three/  
white

HR9071  
blue fusion/  
preloved  
blue

ALLOVER PRINT POLO

MSRP: \$65    TM1013S23    • Sizes: S-2XL    • 100% recycled polyester piqué



HR8000  
blue fusion/  
lucid blue/  
grey four

HR7998  
white/blue fusion/  
grey three

TEXTURED JACQUARD POLO

MSRP: \$70    TM1027S23    • Sizes: S-3XL    • 100% recycled polyester raschel



HS1111  
collegiate navy/black

HS1113  
white/grey  
two

HS1114  
olive strata/  
black

HS7609  
blue fusion/  
collegiate  
navy

OTTOMAN STRIPE POLO

MSRP: \$65    TM1969S22    • Sizes: S-3XL    • 93% recycled polyester, 7% elastane single jersey



HA9167  
grey two/white

HR9072  
collegiate  
navy/white

HR9074  
blue fusion/  
preloved  
blue

ULTIMATE365 SOLID POLO

MSRP: \$65    TM1860S21    • Sizes: S-3XL    • 88% recycled polyester, 12% elastane single jersey



GM0096  
white

HR9043  
collegiate  
navy

HR9044  
blue fusion

ULTIMATE365 HEATHER POLO

MSRP: \$65 TM1862S21 • Sizes: S-3XL • 44% polyester, 44% recycled polyester, 12% elastane single jersey



GM0271  
grey three mel.

HR9077  
collegiate  
navy mel.

HR9079  
blue fusion  
mel.

TWO COLOR STRIPE POLO

MSRP: \$60 TM1010S23 • Sizes: S-2XL • 100% recycled polyester piqué



HR7983  
grey three/white

HR8012  
blue fusion/  
preloved blue

HR8013  
collegiate  
navy/blue  
fusion

HS7580  
collegiate  
navy/white

ULTIMATE365 TOUR FLAT KNIT PULLOVER CREWNECK

MSRP: \$150 TM4504S23 • Sizes: S-2XL • 54% recycled polyester, 20% polyacrylics, 20% recycled nylon, 6% wool knit



HR7959  
collegiate navy/white

GO-TO LIGHTWEIGHT WIND HOODIE

MSRP: \$130 TM4503S23 • Sizes: S-2XL • 100% recycled polyester single jersey



HR7960  
collegiate navy

GO-TO SHORT SLEEVE SWEATSHIRT TEE

MSRP: \$80 TM1021S23 • Sizes: S-2XL • 53% organic cotton, 47% recycled polyester interlock



IA4770  
collegiate navy

GO-TO QUARTER ZIP PULLOVER

MSRP: \$110 TM4508S23 • Sizes: S-3XL • 83% cotton, 17% recycled polyester doubleknit



HR7952  
collegiate navy

HR7953  
blue down

RIPSTOP QUARTER ZIP PULLOVER HOODIE

MSRP: \$110 TM4507S23CF • Sizes: S-2XL • 96% nylon, 4% elastane ripstop



HY5378  
blue fusion

HY5379  
olive strata

3-STRIPES COLD.RDY HOODIE

MSRP: \$90 TM4473F22 • Sizes: S-2XL • 100% recycled polyester fleece



HS4813  
collegiate navy

HF6510  
white

ELEVATED QUARTER ZIP PULLOVER

MSRP: \$90 TM4500S23CF • Sizes: S-3XL • 71% recycled polyester, 24% viscose, 5% elastane interlock



IA4759  
grey three

IB4535  
collegiate  
navy

IB4536  
white

IB4538  
blue fusion



ELEVATED QUARTER ZIP PULLOVER VEST

MSRP: \$80 TM4501S23CF • Sizes: S-2XL • 71% recycled polyester, 24% viscose, 5% elastane interlock



MICRODOT QUARTER ZIP PULLOVER

MSRP: \$85 TM4506S23 • Sizes: S-2XL • 91% recycled polyester, 9% elastane doubleknit



DWR QUARTER ZIP

MSRP: \$80 TM4475F22 • Sizes: S-3XL • 100% recycled polyester doubleknit



CORE CREW NECK SWEATSHIRT

MSRP: \$75 TM4474F22 • Sizes: S-2XL • 74% recycled polyester, 26% viscose terry loop



3-STRIPES QUARTER ZIP SWEATSHIRT

MSRP: \$70 TM4410S21 • Sizes: S-3XL • 53% cotton, 47% recycled polyester doubleknit



UPF QUARTER ZIP PULLOVER

MSRP: \$65 TM4467S22 • Sizes: S-3XL • 100% recycled polyester doubleknit



ULTIMATE365 TOUR NYLON TAPERED FIT GOLF PANT

MSRP: \$120 TM6506S23 • Sizes: 30-42 • 92% recycled nylon, 8% elastane plain weave



GO-TO 5-POCKET TAPERED FIT GOLF PANT

MSRP: \$100 TM6505S23 • Sizes: 28-44 • 56% cotton, 38% lyocell, 6% elastane twill



RIPSTOP GOLF PANT

MSRP: \$95 TM6502S23CF • Sizes: S-2XL • 96% nylon, 4% elastane ripstop



CROSSHATCH PANT

MSRP: \$90 TM6466S22 • Sizes: 30-42 • 69% recycled polyester, 20% cotton, 11% elastane plain weave



ULTIMATE365 REGULAR FIT GOLF PANT

MSRP: \$85 TM6471S22 • Sizes: 28-44 • 100% recycled polyester twill



GO-TO 9 INCH GOLF SHORT

MSRP: \$85 TM6503S23 • Sizes: 30-42 • 56% cotton, 38% lycell, 6% elastane twill



RIPSTOP 9 INCH GOLF SHORT

MSRP: \$80 TM6508S23CF • Sizes: S-2XL • 96% nylon, 4% elastane ripstop



GO-TO COMMUTER PANT

MSRP: \$90 TM6467S22 • Sizes: 30-42 • 95% recycled nylon, 5% elastane twill



ULTIMATE365 TAPERED FIT GOLF PANT

MSRP: \$85 TM6472S22 • Sizes: 28-44 • 100% recycled polyester twill



TEXTURED 9 INCH GOLF SHORT

MSRP: \$80 TM6509S23 • Sizes: 30-42 • 88% recycled polyester, 12% elastane plain weave





ULTIMATE365 PRINTED 9 INCH GOLF SHORT

MSRP: \$75 TM6500S23 • Sizes: 30-42 • 88% recycled polyester, 12% elastane plain weave



HR7936  
blue fusion/  
white

HR7937  
white/grey  
three

HR7935  
collegiate navy/white

CROSSHATCH 9 INCH GOLF SHORT

MSRP: \$75 TM6464S22 • Sizes: 30-42 • 69% recycled polyester, 20% cotton, 11% elastane plain weave



HG8845  
hemp/white

HR9052  
collegiate  
navy/white

HR9055  
blue fusion/  
white

HA6225  
grey three/white

ULTIMATE365 8.5 INCH GOLF SHORT

MSRP: \$70 TM6512S23 • Sizes: 28-44 • 88% recycled polyester, 12% elastane plain weave



HR7939  
grey three

HR7940  
hemp

HR7942  
blue fusion

HR7944  
olive strata

HR7938  
collegiate navy

ULTIMATE365 10 INCH GOLF SHORT

MSRP: \$70 TM6511S23 • Sizes: 28-44 • 88% recycled polyester, 12% elastane plain weave



HR7946  
grey three

HR7948  
blue fusion

HR7950  
olive strata

HR7951  
hemp

HR7945  
collegiate navy







ULTIMATE365 TOUR TEXTURED POLO

MSRP: \$95 TM1033S23 • Sizes: S-2XL • adidas PRIMEKNIT 74% recycled polyester, 26% recycled nylon seamless



HS7595  
white/collegiate navy

GO-TO CAMP GOLF SHIRT

MSRP: \$90 TM1035S23 • Sizes: S-2XL • 90% recycled polyester, 10% elastane seersucker



HR7967  
collegiate navy

GO-TO PIQUE POLO

MSRP: \$90 TM1029S23 • Sizes: S-2XL • 64% cotton, 36% recycled polyester doubleknit



HR7976  
coral fusion  
Available 4/1

HR7975  
collegiate navy

GO-TO PRINT POLO

MSRP: \$80 TM1025S23 • Sizes: S-2XL • 74% recycled polyester, 19% cotton, 7% elastane single jersey



HS1120  
coral fusion  
Available 4/1

GO-TO STRIPE POLO

MSRP: \$80 TM1030S23 • Sizes: S-2XL • 74% recycled polyester, 19% cotton, 7% elastane single jersey



IA7815  
coral fusion  
Available 4/1

HR7974  
collegiate navy

GO-TO POLO

MSRP: \$75 TM1028S23 • Sizes: S-2XL • 74% recycled polyester, 19% cotton, 7% elastane single jersey



HR7978  
white  
melange

HR7977  
collegiate navy mel.

FLORAL POLO

MSRP: \$70 TM1036S23 • Sizes: S-2XL • 88% recycled polyester, 12% elastane single jersey



HY5372  
coral fusion/pantone/white  
Available 4/1

HEAT.RDY POLO

MSRP: \$80 TM1017S23 • Sizes: S-2XL • 100% recycled polyester doubleknit



HS7612  
coral fusion  
Available 4/1

HS1134  
collegiate navy

FLOWER MESH POLO

MSRP: \$70 TM1020S23 • Sizes: S-2XL • 92% recycled polyester, 8% elastane mesh



HS1131  
white/  
collegiate  
navy

HS1130  
coral fusion/  
white  
Available 4/1

HS1129  
olive strata/black



ULTIMATE365 ALLOVER PRINT POLO

MSRP: \$70 TM1016S23 • Sizes: S-3XL • 88% recycled polyester, 12% elastane single jersey



SPACE DYE POLO

MSRP: \$70 TM1024S23 • Sizes: S-2XL • 89% recycled nylon, 11% elastane piqué



OTTOMAN STRIPE POLO

MSRP: \$65 TM1969S22 • Sizes: S-3XL • 93% recycled polyester, 7% elastane single jersey



STRIPE ZIPPER POLO

MSRP: \$70 TM1022S23CF • Sizes: S-2XL • 88% recycled polyester, 12% elastane single jersey



TEXTURED JACQUARD POLO

MSRP: \$70 TM1027S23 • Sizes: S-3XL • 100% recycled polyester raschel



LONG SLEEVE POLO

MSRP: \$70 TM1012S23 • Sizes: S-2XL • 88% recycled polyester, 12% elastane single jersey



JACQUARD POLO

MSRP: \$70 TM1026S23 • Sizes: S-2XL • 78% recycled polyester, 22% recycled nylon



TEXTURE STRIPE POLO

MSRP: \$65 TM1992F22 • Sizes: S-2XL • 100% recycled polyester piqué



ALLOVER PRINT POLO

MSRP: \$65 TM1013S23 • Sizes: S-2XL • 100% recycled polyester piqué



ULTIMATE365 SOLID POLO

MSRP: \$65 TM1860S21 • Sizes: S-3XL • 88% recycled polyester, 12% elastane single jersey



ULTIMATE365 HEATHER POLO

MSRP: \$65 TM1862S21 • Sizes: S-3XL • 44% polyester, 44% recycled polyester, 12% elastane single jersey



TWO COLOR STRIPE POLO

MSRP: \$60 TM1010S23 • Sizes: S-2XL • 100% recycled polyester piqué



ULTIMATE365 TOUR FLAT KNIT PULLOVER CREWNECK

MSRP: \$150 TM4504S23 • Sizes: S-2XL • 54% recycled polyester, 20% polyacrylics, 20% recycled nylon, 6% wool knit



GO-TO LIGHTWEIGHT WIND HOODIE

MSRP: \$130 TM4503S23 • Sizes: S-2XL • 100% recycled polyester single jersey



GO-TO SHORT SLEEVE SWEATSHIRT TEE

MSRP: \$80 TM1021S23 • Sizes: S-2XL • 53% organic cotton, 47% recycled polyester interlock



GO-TO QUARTER ZIP PULLOVER

MSRP: \$110 TM4508S23 • Sizes: S-2XL • 83% cotton, 17% recycled polyester doubleknit



RIPSTOP QUARTER ZIP PULLOVER HOODIE

MSRP: \$110 TM4507S23CF • Sizes: S-2XL • 96% nylon, 4% elastane ripstop



3-STRIPES COLD.RDY HOODIE

MSRP: \$90 TM4473F22 • Sizes: S-2XL • 100% recycled polyester fleece





ELEVATED QUARTER ZIP PULLOVER

MSRP: \$90 TM4500S23CF • Sizes: S-3XL • 71% recycled polyester, 24% viscose, 5% elastane interlock



ELEVATED QUATERZIP PULLOVER VEST

MSRP: \$80 TM4501S23CF • Sizes: S-2XL • 71% recycled polyester, 24% viscose, 5% elastane interlock



MICRODOT QUARTER ZIP PULLOVER

MSRP: \$85 TM4506S23 • Sizes: S-2XL • 91% recycled polyester, 9% elastane doubleknit



DWR QUARTER ZIP

MSRP: \$80 TM4475F22 • Sizes: S-3XL • 100% recycled polyester doubleknit



CORE CREW NECK SWEATSHIRT

MSRP: \$75 TM4474F22 • Sizes: S-2XL • 74% recycled polyester, 26% viscose terry loop



3-STRIPES QUARTER ZIP SWEATSHIRT

MSRP: \$70 TM4410S21 • Sizes: S-3XL • 53% cotton, 47% recycled polyester doubleknit



UPF QUARTER ZIP PULLOVER

MSRP: \$65 TM4467S22 • Sizes: S-3XL • 100% recycled polyester doubleknit



ULTIMATE365 TOUR NYLON TAPERED FIT GOLF PANT

MSRP: \$120 TM6506S23 • Sizes: 30-42 • 92% recycled nylon, 8% elastane plain weave



GO-TO 5-POCKET TAPERED FIT GOLF PANT

MSRP: \$100 TM6505S23 • Sizes: 28-44 • 56% cotton, 38% lyocell, 6% elastane twill



RIPSTOP GOLF PANT

MSRP: \$95 TM6502S23CF • Sizes: S-2XL • 96% nylon, 4% elastane ripstop



HY5382  
collegiate navy

HY5381  
olive strata

ULTIMATE365 REGULAR FIT GOLF PANT

MSRP: \$85 TM6471S22 • Sizes: 28-44 • 100% recycled polyester twill



HA1461  
white

HA9140  
grey three

HC5581  
hemp

HG8847  
grey five

HR9050  
olive strata

IC0092  
collegiate navy

RIPSTOP 9 INCH GOLF SHORT

MSRP: \$80 TM6508S23CF • Sizes: S-2XL • 96% nylon, 4% elastane ripstop



HY5377  
olive strata

HY5374  
white

HY5375  
collegiate navy

CROSSHATCH PANT

MSRP: \$90 TM6466S22 • Sizes: 30-42 • 69% recycled polyester, 20% cotton, 11% elastane plain weave



HR9051  
collegiate navy/  
grey three

HS3366  
hemp/white

ULTIMATE365 TAPERED FIT GOLF PANT

MSRP: \$85 TM6472S22 • Sizes: 28-44 • 100% recycled polyester twill



HA1464  
hemp

HA6204  
white

HA9134  
grey three

HC6645  
grey five

HR9046  
collegiate navy

HR9048  
olive strata

TEXTURED 9 INCH GOLF SHORT

MSRP: \$80 TM6509S23 • Sizes: 30-42 • 88% recycled polyester, 12% elastane plain weave



HR7915  
olive strata/hemp

GO-TO COMMUTER PANT

MSRP: \$90 TM6467S22 • Sizes: 30-42 • 95% recycled nylon, 5% elastane twill



HA6219  
hemp

IA4771  
collegiate navy

GO-TO 9 INCH GOLF SHORT

MSRP: \$85 TM6503S23 • Sizes: 30-42 • 56% cotton, 38% lyocell, 6% elastane twill



HR7928  
collegiate navy

HR7929  
white

IA4769  
clear brown

IB6056  
olive strata

ULTIMATE365 PRINTED 9 INCH GOLF SHORT

MSRP: \$75 TM6500S23 • Sizes: 30-42 • 88% recycled polyester, 12% elastane plain weave



HR7935  
collegiate navy/white

HS7615  
coral fusion/  
olive strata  
Available 4/1

HR7937  
white/grey  
three



CROSSHATCH 9 INCH GOLF SHORT

MSRP: \$75 TM6464S22 • Sizes: 30-42 • 69% recycled polyester, 20% cotton, 11% elastane plain weave



HA6225  
grey three/  
white

HG8845  
hemp/white

HR9052  
collegiate  
navy/white

HR9053  
coral fusion/white  
Available 4/1

ULTIMATE365 8.5 INCH GOLF SHORT

MSRP: \$70 TM6512S23 • Sizes: 28-44 • 88% recycled polyester, 12% elastane plain weave



HR7939  
grey three

HR7944  
olive strata

HR7940  
hemp

HR7943  
coral fusion  
Available 4/1

HR7938  
collegiate navy

ULTIMATE365 10 INCH GOLF SHORT

MSRP: \$70 TM6511S23 • Sizes: 28-44 • 88% recycled polyester, 12% elastane plain weave



HR7946  
grey three

HR7950  
olive strata

HR7951  
hemp

HR7949  
coral fusion  
Available 4/1

HR7945  
collegiate navy

ULTIMATE365 TOUR NO SHOW POLO

<b>MSRP: \$95</b> TM1031S23	<ul style="list-style-type: none"><li>Sizes: S-2XL</li><li>Regular fit</li><li>Two-button ribbed polo collar</li><li>100% recycled polyester doubleknit</li></ul>	<ul style="list-style-type: none"><li>Breathable, durable, moisture-wicking fabric</li><li>Contrast collar, cuffs and inner placket</li><li>Split hem sides</li></ul>
--------------------------------	---	---



HR7971  
black

ULTIMATE365 TOUR MESH PRINT POLO

<b>MSRP: \$95</b> TM1034S23	<ul style="list-style-type: none"><li>Sizes: S-2XL</li><li>Regular fit</li><li>Two-button polo collar</li><li>89% recycled nylon, 11% elastane single jersey</li></ul>	<ul style="list-style-type: none"><li>Breathable, durable, moisture-wicking fabric</li><li>Allover print</li><li>Split hem sides</li></ul>
--------------------------------	--	--



HR7968  
black/grey five

GO-TO PRINT POLO

<b>MSRP: \$80</b> TM1025S23	<ul style="list-style-type: none"><li>Sizes: S-2XL</li><li>Regular fit</li><li>Two-button polo collar with wide-spread collar</li><li>Flexible collar construction</li></ul>	<ul style="list-style-type: none"><li>74% recycled polyester, 19% cotton, 7% elastane single jersey</li><li>Lightweight stretch fabric with a soft feel</li></ul>	<ul style="list-style-type: none"><li>Moisture-absorbing AEROREADY</li></ul>
--------------------------------	--	---	--



HS1119  
blue down

ULTIMATE365 TOUR POLO

<b>MSRP: \$95</b> TM1032S23	<ul style="list-style-type: none"><li>Sizes: S-2XL</li><li>Regular fit</li><li>adidas PRIMEKNIT</li><li>74% recycled polyester, 26% recycled nylon seamless</li></ul>	<ul style="list-style-type: none"><li>One-button ribbed polo collar</li><li>Breathable, durable, moisture-wicking fabric</li><li>Ribbed cuffs with contrast tipping</li></ul>
--------------------------------	---	---



HS7589  
black/lucid blue

GO-TO CAMP GOLF SHIRT

<b>MSRP: \$90</b> TM1035S23	<ul style="list-style-type: none"><li>Sizes: S-2XL</li><li>Regular fit</li><li>Button front with fold-down shirt collar</li><li>Split hem</li></ul>	<ul style="list-style-type: none"><li>90% recycled polyester, 10% elastane seersucker</li><li>Slightly longer back hem</li></ul>
--------------------------------	---	--



HR7967  
collegiate navy

GO-TO STRIPE POLO

<b>MSRP: \$80</b> TM1030S23	<ul style="list-style-type: none"><li>Sizes: S-2XL</li><li>Regular fit</li><li>Two-button polo collar with wide-spread collar</li><li>Rich cotton feel with stretch</li></ul>	<ul style="list-style-type: none"><li>74% recycled polyester, 19% cotton, 7% elastane single jersey</li><li>Split hem on sides</li><li>Moisture-absorbing AEROREADY</li></ul>
--------------------------------	---	---



HR7974  
collegiate navy

ULTIMATE365 TOUR TEXTURED POLO

<b>MSRP: \$95</b> TM1033S23	<ul style="list-style-type: none"><li>Sizes: S-2XL</li><li>Regular fit</li><li>adidas PRIMEKNIT</li><li>74% recycled polyester, 26% recycled nylon seamless</li></ul>	<ul style="list-style-type: none"><li>Two-button ribbed athletic collar</li><li>Allover tonal jacquard</li><li>Colorblocked</li><li>Breathable, durable, moisture-wicking fabric</li></ul>
--------------------------------	---	--



HS7595  
white/  
collegiate navy

GO-TO PIQUE POLO

<b>MSRP: \$90</b> TM1029S23	<ul style="list-style-type: none"><li>Sizes: S-2XL</li><li>Regular fit</li><li>Two-button polo collar with elevated top button</li><li>Rich cotton feel with stretch</li></ul>	<ul style="list-style-type: none"><li>Split hem sides</li><li>Slightly longer back hem</li><li>64% cotton, 36% recycled polyester doubleknit</li><li>brrr® Triple Chill Effect fabric</li></ul>
--------------------------------	--	---



HR7975  
collegiate navy

GO-TO POLO

<b>MSRP: \$75</b> TM1028S23	<ul style="list-style-type: none"><li>Sizes: S-2XL</li><li>Regular fit</li><li>Two-button polo collar with wide-spread collar</li><li>Rich cotton feel with stretch</li></ul>	<ul style="list-style-type: none"><li>74% recycled polyester, 19% cotton, 7% elastane single jersey</li><li>Split hem on sides</li><li>Moisture-absorbing AEROREADY</li></ul>
--------------------------------	---	---



HR7977  
collegiate navy mel.

HEAT.RDY POLO

<b>MSRP: \$80</b> TM1017S23	<ul style="list-style-type: none"><li>Sizes: S-2XL</li><li>Regular fit</li><li>Three-button polo collar</li><li>Contrast sleeve hems</li><li>100% recycled polyester doubleknit</li></ul>	<ul style="list-style-type: none"><li>HEAT.RDY</li></ul>
--------------------------------	---	--



STRIPE ZIPPER POLO

<b>MSRP: \$70</b> TM1022S23CF	<ul style="list-style-type: none"><li>Sizes: S-2XL</li><li>Regular fit</li><li>Zip polo collar</li><li>88% recycled polyester, 12% elastane single jersey</li></ul>	<ul style="list-style-type: none"><li>Breathable, durable, moisture-wicking fabric</li><li>Allover print</li></ul>
----------------------------------	---	--



ULTIMATE365 ALLOVER PRINT POLO

<b>MSRP: \$70</b> TM1016S23	<ul style="list-style-type: none"><li>Sizes: S-3XL</li><li>Regular fit</li><li>Three-button polo collar</li><li>88% recycled polyester, 12% elastane single jersey</li><li>Breathable, durable, moisture-wicking fabric</li></ul>	<ul style="list-style-type: none"><li>Allover print</li><li>Yarn contains 50% Parley Ocean Plastic</li><li>This garment contains a minimum of 40% recycled material in total</li></ul>
--------------------------------	---	--



FLOWER MESH POLO

<b>MSRP: \$70</b> TM1020S23	<ul style="list-style-type: none"><li>Sizes: S-2XL</li><li>Regular fit</li><li>Three-button polo collar</li><li>92% recycled polyester, 8% elastane mesh</li></ul>	<ul style="list-style-type: none"><li>Breathable, durable, moisture-wicking fabric</li><li>Four-way stretch</li><li>Allover print</li></ul>
--------------------------------	--	---



SPACE DYE POLO

<b>MSRP: \$70</b> TM1024S23	<ul style="list-style-type: none"><li>Sizes: S-2XL</li><li>Regular fit</li><li>Three-button polo collar</li><li>89% recycled nylon, 11% elastane piqué</li></ul>	<ul style="list-style-type: none"><li>Breathable, durable, moisture-wicking fabric</li></ul>
--------------------------------	--	--



JACQUARD POLO

<b>MSRP: \$70</b> TM1026S23	<ul style="list-style-type: none"><li>Sizes: S-2XL</li><li>Regular fit</li><li>Three-button polo collar</li><li>78% recycled polyester, 22% recycled nylon jacquard</li></ul>	<ul style="list-style-type: none"><li>Breathable, durable, moisture-wicking fabric</li></ul>
--------------------------------	---	--



FLORAL POLO

<b>MSRP: \$70</b> TM1036S23	<ul style="list-style-type: none"><li>Sizes: S-2XL</li><li>Regular fit</li><li>Three-button polo collar</li><li>88% recycled polyester, 12% elastane single jersey</li></ul>	<ul style="list-style-type: none"><li>Breathable, durable, moisture-wicking fabric</li><li>Allover print</li></ul>
--------------------------------	--	--



TEXTURED JACQUARD POLO

<b>MSRP: \$70</b> TM1027S23	<ul style="list-style-type: none"><li>Sizes: S-3XL</li><li>Regular fit</li><li>Three-button polo collar</li><li>100% recycled polyester raschel</li><li>Breathable, durable, moisture-wicking fabric</li></ul>	
--------------------------------	--	--





TEXTURE STRIPE POLO

<b>MSRP: \$65</b> TM1992F22	<ul style="list-style-type: none"><li>Sizes: S-2XL</li><li>Regular fit</li><li>Two-button polo collar</li><li>100% recycled polyester piqué</li><li>Highly breathable four-way stretch fabric</li></ul>	<ul style="list-style-type: none"><li>Durable and quick drying</li><li>Reinforced shoulder seams</li></ul>
--------------------------------	---	--



LONG SLEEVE POLO

<b>MSRP: \$70</b> TM1012S23	<ul style="list-style-type: none"><li>Sizes: S-2XL</li><li>Regular fit</li><li>Two-button ribbed sport collar</li><li>88% recycled polyester, 12% elastane single jersey</li></ul>	<ul style="list-style-type: none"><li>Brushed-back fabric</li><li>Moisture-absorbing AEROREADY</li></ul>
--------------------------------	--	--



ULTIMATE365 SOLID POLO

<b>MSRP: \$65</b> TM1860S21	<ul style="list-style-type: none"><li>Sizes: S-3XL</li><li>88% recycled polyester, 12% elastane single jersey</li></ul>
--------------------------------	---



OTTOMAN STRIPE POLO

<b>MSRP: \$65</b> TM1969S22	<ul style="list-style-type: none"><li>Sizes: S-3XL</li><li>Regular fit</li><li>Three-button polo collar</li><li>93% recycled polyester, 7% elastane single jersey</li></ul>	<ul style="list-style-type: none"><li>Side hem vents</li><li>Stripe graphic</li><li>PRIMEGREEN</li></ul>
--------------------------------	---	--



ULTIMATE365 HEATHER POLO

<b>MSRP: \$65</b> TM1862S21	<ul style="list-style-type: none"><li>Sizes: S-3XL</li><li>44% polyester, 44% recycled polyester, 12% elastane single jersey</li></ul>
--------------------------------	--



ALLOVER PRINT POLO

<b>MSRP: \$65</b> TM1013S23	<ul style="list-style-type: none"><li>Sizes: S-2XL</li><li>Regular fit</li><li>Three-button polo collar</li><li>100% recycled polyester piqué</li><li>Allover print</li></ul>
--------------------------------	---



TWO COLOR STRIPE POLO

MSRP: \$60  
TM1010S23

- Sizes: S-2XL
- Regular fit
- Two-button polo collar
- 100% recycled polyester piqué
- All-over striped print



PERFORMANCE POLO

MSRP: \$55  
TM1377S21

- Sizes: S-3XL
- Regular fit
- Three-button polo collar
- 100% recycled polyester piqué
- Stretchy, soft and smooth fabric

• PRIMEGREEN



UPF BASE LAYER

MSRP: \$60  
TM1958S22

- Sizes: S-2XL
- Crewneck
- 88% recycled polyester, 12% elastane single jersey
- Soft, lightweight fabric
- Moisture absorbing

- Raglan sleeves
- UV 50+ factor
- PRIMEGREEN



UPF LONG SLEEVE POLO SHIRT

MSRP: \$65  
TM1953S22CF

- Sizes: S-2XL
- Regular fit
- Three-button polo collar
- 100% recycled polyester piqué
- Moisture absorbing

- Cuffed sleeves
- Shaped hem
- UV 50+ factor
- PRIMEGREEN



ULTIMATE365 TOUR FLAT KNIT PULLOVER CREWNECK

MSRP: \$150

TM4504S23

Sizes: S-2XL

Regular fit

adidas PRIMEKNIT 54% recycled polyester, 20% polyacrylics, 20% recycled nylon, 6% wool knit

Ribbed crewneck

Soft, cotton-feel, textured fabric great for layering

Ribbed cuffs and hem

Quick-dry



HR7959  
collegiate navy/  
white

GO-TO LIGHTWEIGHT WIND HOODIE

MSRP: \$130

TM4503S23

Sizes: S-2XL

Regular fit

Hooded with one front snap button

Soft feel

Front pockets

Side seam zips

Quick-dry fabric

100% recycled polyester single jersey

WIND.RDY



HR7960  
collegiate navy

3-STRIPES COLD.RDY HOODIE

MSRP: \$90

TM4473F22

Sizes: S-2XL

Regular fit

Hood with bungee drawcord

100% recycled polyester fleece

Raglan sleeves

Soft brushed-back fabric traps heat

Drawcord on hem

COLD.RDY



HI3847  
black

HF6510  
white

HS4813  
collegiate  
navy

ULTIMATE365 TOUR STRETCH ANORAK QUARTER ZIP PULLOVER

MSRP: \$130

TM4505S23

Sizes: S-2XL

Regular fit

Quarter zip with stand-up collar

92% recycled nylon, 8% elastane plain weave

Soft, cotton-feel, textured fabric great for layering

Front pockets

Zip pocket on chest

Banded sleeves

Quick-dry



HS7582  
black

RIPSTOP QUARTER ZIP PULLOVER HOODIE

MSRP: \$110

TM4507S23CF

Sizes: S-2XL

Regular fit

96% nylon, 4% elastane ripstop

Hidden quarter zip with hood

Front pockets

Elastic sleeve hems

Elastic hem with drawcord

Quick-dry

Soft, cotton-feel, textured fabric great for layering



HY5378  
blue fusion

HY5379  
olive strata

HY5380  
black

GO-TO SHORT SLEEVE SWEATSHIRT TEE

MSRP: \$80

TM1021S23

Sizes: S-2XL

Loose fit

Ribbed crewneck

53% organic cotton, 47% recycled polyester interlock

Lightweight stretch fabric with a soft feel

Flexible collar construction

Front pockets

Ribbed hem

Moisture-absorbing AEROREADY



IA4770  
collegiate navy

GO-TO QUARTER ZIP PULLOVER

MSRP: \$110

TM4508S23

Sizes: S-2XL

Regular fit

Hidden half zip with low collar

83% cotton, 17% recycled polyester doubleknit

Soft, cotton-feel, textured fabric great for layering

Kangaroo pocket

Ribbed inner collar, cuffs and hem

Quick-dry

Supports the Better Cotton Initiative



HR7952  
collegiate navy

HR7953  
blue dawn

MICRODOT QUARTER ZIP PULLOVER

MSRP: \$85

TM4506S23

Sizes: S-2XL

Regular fit

Quarter zip with low stand-up collar

Front pockets

91% recycled polyester, 9% elastane doubleknit

Soft, cotton-feel, textured fabric great for layering

Elastic bindings

Quick-dry



HS7588  
collegiate navy/  
blue fusion

IA4763  
white/grey  
three



ELEVATED QUARTER ZIP PULLOVER

<b>MSRP: \$90</b> TM4500S23CF	<ul style="list-style-type: none"><li>Sizes: S-3XL</li><li>Regular fit</li><li>Half zip with mock neck</li><li>71% recycled polyester, 24% viscose, 5% elastane interlock</li></ul>	<ul style="list-style-type: none"><li>Soft, rich fabric with stretch</li><li>Banded sleeves and hem</li></ul>
----------------------------------	---	---



ELEVATED QUATERZIP PULLOVER VEST

<b>MSRP: \$80</b> TM4501S23CF	<ul style="list-style-type: none"><li>Sizes: S-2XL</li><li>Regular fit</li><li>Quarter zip with stand-up collar</li><li>71% recycled polyester, 24% viscose, 5% elastane interlock</li></ul>	<ul style="list-style-type: none"><li>Soft, rich fabric with stretch</li><li>Banded hem</li></ul>
----------------------------------	--	---



DWR QUARTER ZIP

<b>MSRP: \$80</b> TM4475F22	<ul style="list-style-type: none"><li>Sizes: S-3XL</li><li>Regular fit</li><li>Quarter zip with stand-up collar</li><li>100% recycled polyester doubleknit</li></ul>	<ul style="list-style-type: none"><li>Cuffed sleeves</li><li>Durable water-repellent (DWR) coating</li></ul>
--------------------------------	--	--



CORE CREW NECK SWEATSHIRT

<b>MSRP: \$75</b> TM4474F22	<ul style="list-style-type: none"><li>Sizes: S-2XL</li><li>Regular fit</li><li>Crewneck</li><li>74% recycled polyester, 26% viscose terry loop</li></ul>	<ul style="list-style-type: none"><li>Cuffed sleeves and hem</li><li>Contains a minimum of 60% recycled content</li></ul>
--------------------------------	--	---



3-STRIPES QUARTER ZIP SWEATSHIRT

<b>MSRP: \$70</b> TM4410S21	<ul style="list-style-type: none"><li>Sizes: S-3XL</li><li>Regular fit</li><li>Quarter zip with stand-up collar</li><li>53% cotton, 47% recycled polyester doubleknit</li></ul>	<ul style="list-style-type: none"><li>Soft feel</li><li>Mid weight layering sweatshirt</li><li>Two-layer fabric with heathered side and mesh side</li></ul>
--------------------------------	---	---



UPF QUARTER ZIP PULLOVER

<b>MSRP: \$65</b> TM4467S22	<ul style="list-style-type: none"><li>Sizes: S-3XL</li><li>Regular fit</li><li>Quarter zip with stand-up collar</li><li>100% recycled polyester doubleknit</li></ul>	<ul style="list-style-type: none"><li>Soft, lightweight fabric</li><li>Moisture absorbing</li><li>UV 50+ factor</li><li>PRIMEGREEN</li></ul>
--------------------------------	--	--



RAIN.RDY JACKET

<b>MSRP: \$280</b> TM5522F22B	<ul style="list-style-type: none"><li>Sizes: S-2XL</li><li>Regular fit</li><li>Full zip with stand-up collar</li><li>Ultralight three-layer knit fabric with natural stretch</li></ul>	<ul style="list-style-type: none"><li>Front zip pockets and zip pocket on chest</li><li>Raglan sleeves</li><li>Drawcord on hem</li><li>Adjustable cuffs</li></ul>	<ul style="list-style-type: none"><li>Waterproof / breathable 10k / 10k 100% recycled polyester interlock</li><li>RAIN.RDY</li></ul>
----------------------------------	--	---	--



RAIN.RDY HALF ZIP JACKET

<b>MSRP: \$220</b> TM5523F22B	<ul style="list-style-type: none"><li>Sizes: S-2XL</li><li>Regular fit</li><li>Half zip with stand-up collar</li><li>Ultralight three-layer knit fabric with natural stretch</li></ul>	<ul style="list-style-type: none"><li>Front zip pockets</li><li>Chest zip pocket</li><li>Drawcord on hem</li><li>Waterproof / breathable 10k / 10k 100% recycled polyester interlock</li></ul>	<ul style="list-style-type: none"><li>Adjustable cuffs</li><li>RAIN.RDY</li></ul>
----------------------------------	--	--	---



RAIN.RDY PANT		
<b>MSRP: \$180</b> TM6484F22B	<ul style="list-style-type: none"> <li>Sizes: S-2XL</li> <li>Regular fit</li> <li>Elastic waist with drawcord</li> <li>Waterproof 100% recycled polyester interlock</li> </ul>	<ul style="list-style-type: none"> <li>Front zip pockets and one back zip pocket</li> <li>One elastic hem</li> <li>Ankle drawcords and zippers</li> <li>RAIN.RDY</li> </ul>



PROVISIONAL PANT		
<b>MSRP: \$80</b> TM6482F22	<ul style="list-style-type: none"> <li>Sizes: S-2XL</li> <li>Regular fit</li> <li>Elastic waist with drawcord</li> <li>100% recycled polyester ripstop</li> <li>Front zip pockets</li> </ul>	<ul style="list-style-type: none"> <li>One back welt pocket</li> <li>Ankle drawcords</li> <li>Water resistant</li> </ul>



GOLF PROVISIONAL JACKET		
<b>MSRP: \$100</b> TM5520F22	<ul style="list-style-type: none"> <li>Sizes: S-3XL</li> <li>Regular fit</li> <li>Full zip with stand-up collar</li> <li>100% recycled polyester ripstop</li> <li>Front zip pockets</li> </ul>	<ul style="list-style-type: none"> <li>Drawcord on waist</li> <li>Colorblocked</li> <li>Water resistant</li> </ul>



CORE VERSATILE FULL ZIP JACKET		
<b>MSRP: \$70</b> TM4468S22	<ul style="list-style-type: none"> <li>Sizes: S-2XL</li> <li>Full zip with stand-up collar</li> <li>100% recycled polyester twill</li> <li>Raglan sleeves with partial elastic cuffs</li> </ul>	<ul style="list-style-type: none"> <li>Front pockets</li> <li>PRIMEGREEN</li> </ul>



PROVISIONAL SHORT SLEEVE JACKET		
<b>MSRP: \$90</b> TM5521F22	<ul style="list-style-type: none"> <li>Sizes: S-2XL</li> <li>Regular fit</li> <li>Half zip with stand-up collar</li> <li>100% recycled polyester ripstop</li> <li>Front zip pockets</li> </ul>	<ul style="list-style-type: none"> <li>Drawcord on hem</li> <li>Colorblocked</li> </ul>







ULTIMATE365 TOUR NYLON TAPERED FIT GOLF PANT

<b>MSRP: \$120</b> TM6506S23	<ul style="list-style-type: none"><li>Sizes: 30-42</li><li>Regular fit</li><li>Belt loops on waist</li><li>92% recycled nylon, 8% elastane plain weave</li></ul>	<ul style="list-style-type: none"><li>Breathable stretch fabric with textured surface</li><li>Front and back pockets</li><li>Exposed elastic back waist</li><li>Tapered legs</li></ul>	<ul style="list-style-type: none"><li>Durable water-repellent (DWR) coating</li></ul>
---------------------------------	--	--	---



GO-TO COMMUTER PANT

<b>MSRP: \$90</b> TM6467S22	<ul style="list-style-type: none"><li>Sizes: 30-42</li><li>95% recycled nylon, 5% elastane twill</li><li>PRIMEGREEN</li></ul>
--------------------------------	---



ULTIMATE365 TAPERED FIT GOLF PANT

<b>MSRP: \$85</b> TM6472S22	<ul style="list-style-type: none"><li>Sizes: 28-44</li><li>Tapered fit</li><li>Belt loops with fly</li><li>100% recycled polyester twill</li><li>Front and back pockets</li></ul>	<ul style="list-style-type: none"><li>Breathable four-way stretch fabric</li><li>Balanced weight fabric</li><li>UV 50+ factor</li></ul>
--------------------------------	---	---



GO-TO 5-POCKET TAPERED FIT GOLF PANT

<b>MSRP: \$100</b> TM6505S23	<ul style="list-style-type: none"><li>Sizes: 28-44</li><li>Regular fit</li><li>Belt loops on waist</li><li>56% cotton, 38% lyocell, 6% elastane twill</li></ul>	<ul style="list-style-type: none"><li>Breathable stretch fabric</li><li>Classic five-pocket construction</li><li>Deeper front pockets</li><li>Tapered legs</li></ul>
---------------------------------	---	--



CROSSHATCH PANT

<b>MSRP: \$90</b> TM6466S22	<ul style="list-style-type: none"><li>Sizes: 30-42</li><li>Regular fit</li><li>Belt loops with fly</li><li>69% recycled polyester, 20% cotton, 11% elastane plain weave</li></ul>	<ul style="list-style-type: none"><li>Front and back pockets</li><li>Tapered legs</li></ul>
--------------------------------	---	---



RIPSTOP GOLF PANT

<b>MSRP: \$95</b> TM6502S23CF	<ul style="list-style-type: none"><li>Sizes: S-2XL</li><li>Regular fit</li><li>Elastic waist with drawcord</li><li>96% nylon, 4% elastane ripstop</li><li>Lightweight fabric</li></ul>	<ul style="list-style-type: none"><li>Front and back pockets</li><li>Elastic hems with inner bungee drawcord</li></ul>
----------------------------------	--	--



ULTIMATE365 REGULAR FIT GOLF PANT

<b>MSRP: \$85</b> TM6471S22	<ul style="list-style-type: none"><li>Sizes: 28-44</li><li>Regular fit</li><li>Belt loops with fly</li><li>100% recycled polyester twill</li><li>Front and back pockets</li></ul>	<ul style="list-style-type: none"><li>Breathable four-way stretch fabric</li><li>Balanced weight fabric</li><li>UV 50+ factor</li></ul>
--------------------------------	---	---



ULTIMATE365 TOUR NYLON 9 INCH GOLF SHORT

<b>MSRP: \$95</b> TM6507S23	<ul style="list-style-type: none"><li>Sizes: 30-42</li><li>Regular fit</li><li>Belt loops on waist</li><li>92% recycled nylon, 8% elastane plain weave</li><li>Breathable stretch fabric with textured surface</li></ul>	<ul style="list-style-type: none"><li>Front and back pockets</li><li>Exposed elastic on back waist</li><li>Tapered legs</li><li>Durable water-repellent (DWR) coating</li></ul>
--------------------------------	--	---



GO-TO 9 INCH GOLF SHORT

<b>MSRP: \$85</b> TM6503S23	<ul style="list-style-type: none"><li>Sizes: 30-42</li><li>Regular fit</li><li>Belt loops on waist</li><li>56% cotton, 38% lyocell, 6% elastane twill</li></ul>	<ul style="list-style-type: none"><li>Stretch fabric with a cool, dry feel</li><li>Front and back pockets</li><li>Elastic back waist</li></ul>
--------------------------------	---	--



<b>IA4769</b> clear brown	<b>IB6056</b> olive strata	<b>HR7928</b> collegiate navy	<b>HR7929</b> white	<b>HR7930</b> black
------------------------------	-------------------------------	----------------------------------	------------------------	------------------------

RIPSTOP 9 INCH GOLF SHORT

<b>MSRP: \$80</b> TM6508S23CF	<ul style="list-style-type: none"><li>Sizes: S-2XL</li><li>Slim fit</li><li>Elastic waist with drawcord</li><li>96% nylon, 4% elastane ripstop</li><li>Front and back pockets</li></ul>	<ul style="list-style-type: none"><li>Exposed elastic on back waist</li><li>Breathable stretch fabric with textured surface</li></ul>
----------------------------------	---	---



<b>HY5374</b> white	<b>HY5375</b> collegiate navy	<b>HY5376</b> blue fusion	<b>HY5377</b> olive strata
------------------------	----------------------------------	------------------------------	-------------------------------

TEXTURED 9 INCH GOLF SHORT

<b>MSRP: \$80</b> TM6509S23	<ul style="list-style-type: none"><li>Sizes: 30-42</li><li>Slim fit</li><li>Belt loops on elastic waist</li><li>88% recycled polyester, 12% elastane plain weave</li></ul>	<ul style="list-style-type: none"><li>Breathable stretch fabric with textured surface</li><li>Front and back pockets</li></ul>
--------------------------------	--	--



<b>HR7915</b> olive strata/hemp	<b>HR7979</b> blue fusion/ collegiate navy	<b>HS7585</b> black/ lucid fuchsia
------------------------------------	--	--

ULTIMATE365 PRINTED 9 INCH GOLF SHORT

<b>MSRP: \$75</b> TM6500S23	<ul style="list-style-type: none"><li>Sizes: 30-42</li><li>Regular fit</li><li>Belt loops on stretch waist</li><li>88% recycled polyester, 12% elastane plain weave</li></ul>	<ul style="list-style-type: none"><li>Allover print</li><li>Front and back pockets</li><li>Moisture-wicking fabric</li><li>adidas-branded silicon gripper tape keep shirts tucked in</li></ul>	<ul style="list-style-type: none"><li>Moisture-wicking stretch fabric</li></ul>
--------------------------------	---	--	---



<b>HR7935</b> collegiate navy/ white	<b>HR7936</b> blue fusion/ white	<b>HR7937</b> white/ grey three	<b>HS7615</b> coral fusion/ olive strata Available 4/1
--	--	---------------------------------------	---

CARGO 9 INCH GOLF SHORT

<b>MSRP: \$65</b> TM6510S23	<ul style="list-style-type: none"><li>Sizes: 30-42</li><li>Belt loops on waist</li><li>100% recycled polyester dobby</li><li>Front and back pockets</li><li>Zip pocket on side</li></ul>
--------------------------------	--



<b>HR7985</b> collegiate navy	<b>HR7986</b> black	<b>HS5623</b> olive strata
----------------------------------	------------------------	-------------------------------

CROSSHATCH 9 INCH GOLF SHORT

<b>MSRP: \$75</b> TM6464S22	<ul style="list-style-type: none"><li>Sizes: 30-42</li><li>Regular fit</li><li>Stretch waist with belt loops and lockdown zip fly</li><li>69% recycled polyester, 20% cotton, 11% elastane plain weave</li></ul>	<ul style="list-style-type: none"><li>Moisture absorbing</li><li>Front and back pockets</li></ul>
--------------------------------	--	---



<b>HA6225</b> grey three/white	<b>HG8845</b> hemp/white	<b>HR9052</b> collegiate navy/white	<b>HR9053</b> coral fusion/ white Available 4/1	<b>HR9054</b> lucid fuchsia/ grey three	<b>HR9055</b> blue fusion/ white
-----------------------------------	-----------------------------	--	--	---	--

ULTIMATE365 10 INCH GOLF SHORT

<b>MSRP: \$70</b> TM6511S23	<ul style="list-style-type: none"><li>Sizes: 28-44</li><li>Regular fit</li><li>Belt loops on stretch waist</li><li>88% recycled polyester, 12% elastane plain weave</li></ul>	<ul style="list-style-type: none"><li>Four-way stretch fabric</li><li>Front and back pockets</li><li>adidas-branded silicone gripper tape keep shirts tucked in</li><li>Moisture-wicking</li></ul>
--------------------------------	---	--



<b>HR7945</b> collegiate navy	<b>HR7946</b> grey three	<b>HR7951</b> hemp	<b>HR7947</b> lucid fuchsia	<b>HR7948</b> blue fusion	<b>HR7949</b> coral fusion Available 4/1	<b>HR7950</b> olive strata
----------------------------------	-----------------------------	-----------------------	--------------------------------	------------------------------	--	-------------------------------

ULTIMATE365 8.5 INCH GOLF SHORT

MSRP: \$70  
TM6512S23

- Sizes: 28-44
  - Regular fit
  - Belt loops on stretch waist
  - 88% recycled polyester, 12% elastane plain weave
  - Thin, lightweight fabric with four-way stretch
- Front and back pockets
  - adidas-branded silicone gripper tape keep shirts tucked in
  - Moisture-wicking
  - Durable water-repellent (DWR) coating







PERFORMANCE POLO

MSRP: \$55  
TM1377S21

- Sizes: S-3XL
- Regular fit
- Three-button polo collar
- 100% recycled polyester piqué
- Stretchy, soft and smooth fabric

- PRIMEGREEN



UPF QUARTER ZIP PULLOVER

MSRP: \$65  
TM4467S22

- Sizes: S-3XL
- Quarter zip with stand-up collar
- 100% recycled polyester doubleknit
- Soft, lightweight fabric

- Moisture absorbing
- UV50+ factor
- PRIMEGREEN



ULTIMATE365 PANT

MSRP: \$85  
TM6471S22

- Sizes: 28-44
- Regular fit strikes a comfortable balance between loose and snug
- 55% nylon, 34% polyester, 11% elastane twill

- Front and back pockets
- Belt loops
- Zip fly
- Grip tape inside waist
- PFC-free water-repellent finish

- PRIMEGREEN



ULTIMATE365 SHORT 10 INCH

MSRP: \$65  
TM6511S23

- Sizes: 28-44
- Regular fit strikes a comfortable balance between loose and snug
- 88% recycled polyester, 12% elastane plain weave

- Smooth fabric
- Front and back pockets
- Belt loops
- Zip fly
- Silicone grip tape inside waist

- PFC-free water-repellent finish
- These shorts are made with recycled polyester to save resources and decrease emissions



WOMEN'S PERFORMANCE POLO

MSRP: \$55  
TW3601S21

- Sizes: XS-2XL
- Regular fit
- 100% recycled polyester
- Badge of sport heat seal at right hip
- Soft, lightweigth fabric

- 4 button placket
- UPF50+ for sun protection against harmful UV rays
- PRIMEGREEN



WOMEN'S SPACE-DYED POLO

<b>MSRP: \$60</b> TW3624S22	<ul style="list-style-type: none"><li>Sizes: XS-XXL</li><li>Regular fit</li><li>Four-button polo collar</li><li>100% recycled polyester piqué</li><li>Four-way stretch fabric</li></ul>	<ul style="list-style-type: none"><li>Shaped hem</li><li>Soft fabric</li><li>PRIMEGREEN</li></ul>
--------------------------------	---	---



ULTIMATE365 SOLID SKORT

<b>MSRP: \$70</b> TW6816S22	<ul style="list-style-type: none"><li>Sizes: XS-XL 16";XSL-XLL 18"</li><li>Regular fit</li><li>Wide power-mesh waist</li><li>100% recycled polyester twill</li><li>Moisture absorbing</li></ul>	<ul style="list-style-type: none"><li>Two front pockets and two back pockets</li><li>Undershorts with grip tape at leg hem</li><li>UV 50+ factor</li></ul>	<ul style="list-style-type: none"><li>PRIMEGREEN</li></ul>
--------------------------------	---	--	--



TEXTURED FULL-ZIP JACKET

<b>MSRP: \$65</b> TW4600S22	<ul style="list-style-type: none"><li>Sizes: XS-XXL</li><li>Regular fit</li><li>Full zip with high stand-up collar</li><li>Main: 100% recycled polyester doubleknit</li></ul>	<ul style="list-style-type: none"><li>Front body: 96% recycled polyester, 4% elastane jacquard</li><li>Front pockets</li><li>Cuffed sleeves</li><li>Banded hem</li></ul>	<ul style="list-style-type: none"><li>PRIMEGREEN</li></ul>
--------------------------------	---	--	--



ULTIMATE365 MODERN BERMUDA SHORTS

<b>MSRP: \$70</b> TW6823S22	<ul style="list-style-type: none"><li>Sizes: XS-XL</li><li>Slim fit</li><li>Pull-on construction</li><li>100% recycled polyester twill</li><li>Durable four-way stretch fabric</li></ul>	<ul style="list-style-type: none"><li>Front and back pockets</li><li>8.5" inseam</li></ul>
--------------------------------	--	--



PULL-ON ANKLE PANT

<b>MSRP: \$80</b> TW6818S22	<ul style="list-style-type: none"><li>Sizes: XS-XL</li><li>Slim fit</li><li>Wide power-mesh waist</li><li>90% recycled polyester, 10% elastane twill</li></ul>	<ul style="list-style-type: none"><li>Durable four-way stretch fabric</li><li>Front hand pockets with hidden inner zips</li><li>Back pockets</li><li>UV 50+ factor</li></ul>	<ul style="list-style-type: none"><li>Ankle length</li><li>PRIMEGREEN</li></ul>
--------------------------------	--	--	---





BLANK TEE SHIRT

<b>MSRP: \$32</b> TMT22	<ul style="list-style-type: none"><li>• Sizes: S-2XL</li><li>• Regular fit</li><li>• 52% polyester, 48% cotton</li><li>• Badge of Sport heat transfer on wearer's left sleeve</li></ul>
----------------------------	---



BLANK CREW

<b>MSRP: \$60</b> TM4423SZ1US	<ul style="list-style-type: none"><li>• Sizes: S-2XL</li><li>• Regular fit</li><li>• 70% cotton, 30% recycled polyester</li><li>• Badge of Sport heat transfer wearer's right sleeve</li></ul>
----------------------------------	--



BLANK HOODIE

<b>MSRP: \$65</b> TM4422SZ1US	<ul style="list-style-type: none"><li>• Sizes: S-2XL</li><li>• Regular fit</li><li>• 70% cotton, 30% recycled polyester</li><li>• Kangaroo pocket</li><li>• Badge of Sport heat transfer wearer's right sleeve</li></ul>
----------------------------------	--













BOYS FLOWER MESH POLO

MSRP: \$48  
TB1590S23

- Sizes: XS-XL
- Regular fit
- Three-button polo collar
- 92% recycled polyester, 8% elastane mesh
- Soft, four-way stretch fabric
- Durable and quick-drying



BOYS SPORT COLLAR POLO

MSRP: \$38  
TB1591S23

- Sizes: XS-XL
- Regular fit
- Two-button sport collar
- 100% recycled polyester pique
- Soft feel
- Durable, quick-drying fabric



BOYS VERSATILE PULL ON SHORTS

MSRP: \$48  
TB6325S23

- Sizes: XS-XL
- Regular fit
- Drawcord waist with belt loops
- 100% recycled polyester dobby
- Elastic back waist
- Front pockets
- One back patch pocket
- Inseam: 7.5"



BOYS COLORBLOCK HEAT.RDY POLO

MSRP: \$42  
TB1592S23

- Sizes: XS-XL
- Regular fit
- Three-button polo collar
- 100% recycled polyester doubleknit
- Soft fabric
- Colorblocked



BOYS PERFORMANCE POLO

MSRP: \$30  
TB3203S20

- Sizes: XS-XL
- Regular fit
- Three-button polo collar
- 100% recycled polyester
- Soft and breathable
- UV 50+ factor
- PRIMEGREEN



BOYS VERSATILE PULL ON PANTS

MSRP: \$60  
TB6326S23

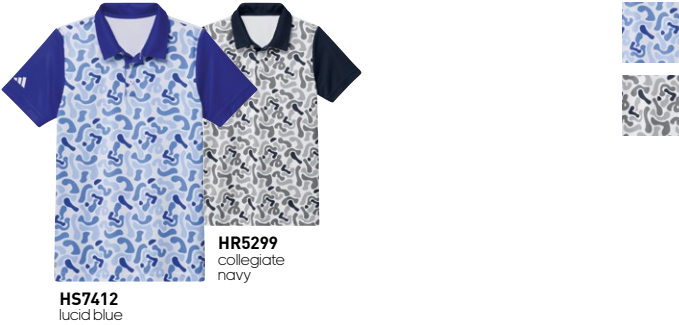
- Sizes: XS-XL
- Regular fit
- Drawcord waist with belt loops
- 100% recycled polyester dobby
- Front pockets
- One back patch pocket
- Elastic cuffs



BOYS CAMO PRINTED POLO

MSRP: \$42  
TB1593S23

- Sizes: XS-XL
- Regular fit
- Three-button polo collar
- 100% recycled polyester interlock
- Soft and lightweight two-way stretch fabric
- Colorblocked
- Graphic on front body
- Durable, quick-drying



BOYS AEROREADY QUARTER ZIP PULLOVER

MSRP: \$50  
TB4006S21EU

- Sizes: XS-XL
- Regular fit
- Quarter zip with mock neck
- 100% recycled polyester pique
- Soft feel
- Banded cuffs and hem
- UV 50+ factor
- PRIMEGREEN



BOYS ULTIMATE365 ADJUSTABLE SHORTS

MSRP: \$45  
TB6315S22

- Sizes: XS-XL
- Regular fit
- Drawcord waist with belt loops
- Elastic waistband on back
- Front pockets and one back pocket
- 100% recycled polyester twill with durable water-repellent (DWR) coating
- Flat front construction
- UV 50+ factor
- PRIMEGREEN





BOYS ULTIMATE365 ADJUSTABLE PANT

- MSRP: \$55  
TB6316S22

- Sizes: XS-XL
  - Regular fit
  - Drawcord waist with belt loops
  - Elastic waistband on back
  - Front pockets and one back pocket

- 100% recycled polyester twill with durable water-repellent (DWR) coating
  - Flat front construction
  - UV 50+ factor

- PRIMEGREEN



IB6058  
collegiate  
navy

HA8005  
black

UNISEX SHORT SLEEVE PAR TEE

- MSRP: \$28  
TB1600S23

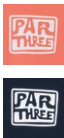
- Sizes: XS-XL
  - Regular fit
  - Crewneck
  - 100% cotton single jersey
  - Soft feel

- adidas Golf graphic
  - Supports the Better Cotton Initiative



HR9902  
coral fusion  
Available 4/1

HS7414  
collegiate  
navy



GIRLS HEAT.RDY PRINTED SLEEVELESS POLO SHIRT

- MSRP: \$38  
TG1581S23

- Sizes: XS-XL
  - Regular fit
  - V-neck with rounded collar
  - 100% recycled polyester doubleknit

- Soft feel
  - Graphic front body and solid-colored back body
  - Breathable, moisture-wicking materials

- Curved hem
  - HEAT.RDY



HR5301  
white  
Available 4/1

HS9620  
collegiate  
navy



PROVISIONAL GOLF JACKET

- MSRP: \$80  
TB5002F22

- Sizes: XS-XL
  - Regular fit
  - Full zip with stand-up collar
  - 100% recycled polyester plain weave

- Mesh lining
  - Front pockets
  - Chest zip pocket
  - Elastic cuffs and hem
  - Critically seam-sealed



HD1040  
grey three

UNISEX COLORBLOCK HOODIE

- MSRP: \$65  
TB1595S23

- Sizes: XS-XL
  - Regular fit
  - Quarter zip with hood
  - 70% cotton, 30% recycled polyester French terry

- Soft feel
  - Front pockets
  - Banded sleeves and hem
  - Colorblocked



HR3074  
court green  
Available 4/1

HS7413  
collegiate  
navy

GIRLS HEAT.RDY POLO

- MSRP: \$42  
TG1582S23

- Sizes: XS-XL
  - Regular fit
  - Two-button low collar
  - 100% recycled polyester doubleknit

- Soft feel
  - Contrast collar and placket
  - Graphic on inner placket
  - Curved front and back hem
  - Graphic 3-Stripes on upper back

- HEAT.RDY



HS9621  
white

HR5302  
coral fusion  
Available 4/1



PROVISIONAL GOLF PANTS

- MSRP: \$70  
TB6002F22

- Sizes: XS-XL
  - Regular fit
  - Elastic waist with drawcord
  - 100% recycled polyester plain weave

- Side seam pockets
  - One back zip pocket
  - Pre-shaped knees
  - Ankle zips



HD1052  
grey five

GIRLS TEXTURED POLO

- MSRP: \$38  
TG1580S23

- Sizes: XS-XL
  - Regular fit
  - Three-button polo collar with contrast tipping
  - 100% recycled polyester piqué

- Soft feel
  - Cap sleeves



HS9619  
lucid blue

HR5300  
collegiate  
navy



GIRLS POLO

- MSRP: \$38  
TG1583S23CF

- Sizes: XS-XL
  - Regular fit
  - V-neck polo collar
  - Soft feel
  - Cap sleeves

- Gathered fabric at back
  - 81% recycled polyester, 14% lyocell, 5% elastane single jersey



IB4518  
blue down mel/  
white

GIRLS PERFORMANCE POLO

<b>MSRP: \$30</b> TG1535S21	<ul style="list-style-type: none"><li>Sizes: XS-XL</li><li>Regular fit</li><li>Three-button polo collar</li><li>100% recycled polyester interlock</li></ul>	<ul style="list-style-type: none"><li>Soft and breathable</li><li>Cap sleeves</li><li>UV 50+ factor</li><li>PRIMEGREEN</li></ul>
--------------------------------	---	--



GIRLS FULL ZIP VERSATILE JACKET

<b>MSRP: \$60</b> TG4025S23	<ul style="list-style-type: none"><li>Sizes: XS-XL</li><li>Regular fit</li><li>Full zip with crewneck</li><li>100% recycled polyester doubleknit</li></ul>	<ul style="list-style-type: none"><li>Soft feel</li><li>Front pockets</li><li>Banded sleeves and hem</li><li>Gathered fabric on back</li></ul>
--------------------------------	--	--



GIRLS HALF ZIP SHORT SLEEVE ROMPER

<b>MSRP: \$60</b> TG6346S23	<ul style="list-style-type: none"><li>Sizes: XS-XL</li><li>Regular</li><li>Half zip with low stand-up collar</li><li>100% recycled polyester doubleweave</li></ul>	<ul style="list-style-type: none"><li>Two front pockets</li><li>One back pocket</li></ul>
--------------------------------	--	---



GIRLS PULL ON SHORTS

<b>MSRP: \$48</b> TG6345S23	<ul style="list-style-type: none"><li>Sizes: XS-XL</li><li>Regular fit</li><li>Drawcord waist with belt loops</li><li>100% recycled polyester plain weave</li></ul>	<ul style="list-style-type: none"><li>Elastic back waist</li><li>Front pockets</li><li>One back patch pocket</li></ul>
--------------------------------	---	--



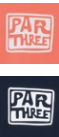
GIRLS RUFFLED SKORT

<b>MSRP: \$50</b> TG6313S20	<ul style="list-style-type: none"><li>Sizes: XS-XL</li><li>Regular fit</li><li>Attached inner short</li><li>88% recycled polyester, 12% elastane</li></ul>	<ul style="list-style-type: none"><li>Soft, stretchy fabric</li><li>Front pockets, tiered ruffle on back</li><li>PRIMEGREEN</li></ul>
--------------------------------	--	---



UNISEX SHORT SLEEVE PAR TEE

<b>MSRP: \$28</b> TB1600S23	<ul style="list-style-type: none"><li>Sizes: XS-XL</li><li>Regular fit</li><li>Crewneck</li><li>100% cotton single jersey</li><li>Soft feel</li></ul>	<ul style="list-style-type: none"><li>adidas Golf graphic</li><li>Supports the Better Cotton Initiative</li></ul>
--------------------------------	---	---



UNISEX COLORBLOCK HOODIE

<b>MSRP: \$65</b> TB1595S23	<ul style="list-style-type: none"><li>Sizes: XS-XL</li><li>Regular fit</li><li>Quarter zip with hood</li><li>70% cotton, 30% recycled polyester French terry</li></ul>	<ul style="list-style-type: none"><li>Soft feel</li><li>Front pockets</li><li>Banded sleeves and hem</li><li>Colorblocked</li></ul>
--------------------------------	--	---



ZG23

MSRP: \$200 WS00021

• Sizes: 7-13, 14, 15



- Lace closure
- SPRINTSKIN® and microfiber-leather upper
- 3D stability wing
- INSITE® sockliner
- Hybrid Lightstrike Pro and Lightstrike cushioning
- Six-cleat Thintech TPU outsole
- Upper contains a minimum of 50% recycled content



**GW1177 / H03671 WIDE**  
ftwr white/dark silver metallic/  
silver met.



**GW1178 / H03672 WIDE**  
core black/dark silver metallic/  
silver met.



**HP2223 / H03674 WIDE**  
ftwr white/core black/  
semi solar red



**GW1179 / H03673 WIDE**  
ftwr white/lucid blue/silver met.

ZG23 BOA®

MSRP: \$220 WS00231

• Sizes: 7-13, 14, 15



- Micro-adjustable dial-based BOA® Fit System
- SPRINTSKIN® and microfiber-leather upper
- 3D stability wing
- INSITE® sockliner
- Hybrid Lightstrike Pro and Lightstrike cushioning
- Six-cleat Thintech TPU outsole



**GY9713**  
ftwr white/core black/silver met.



**GY9716**  
ftwr white/core black/  
semi solar red



TOUR360 22

MSRP: \$210 WS00621

Sizes: 7 - 13, 14, 15



- Lace closure
- Leather upper
- Leather lining
- BOOST midsole
- TPU outsole



GV9400  
ftwr white/lucid blue/silver met.



GY9808  
ftwr white/core black/silver met.



GV7245  
ftwr white/ftwr white/silver met.



GV7247  
ftwr white/collegiate navy/  
silver met.



GZ3158  
core black/core black/iron met.

CODECHAOS 22

MSRP: \$160 WS0069

Sizes: 7 - 13, 14, 15



- Regular fit
- Lace closure
- Waterproof film over textile upper
- INSITE® sockliner
- BOOST midsole
- Adiwear outsole with Twist Grip
- Upper contains a minimum of 50% recycled content



GV9418  
ftwr white/grey six/solar red



GX2618  
core black/ftwr white/grey five



GX3932  
ftwr white/silver met/grey two



GY9820  
ftwr white/core black/  
crystal white



IF2359  
grey three/ftwr white/grey six

CODECHAOS 22 BOA®

MSRP: \$200 WS00021

• Sizes: 7 - 13, 14, 15

- Regular fit
- Micro-adjustable dial-based BOA® Fit System
- Waterproof film over textile upper
- INSITE® sockliner
- BOOST midsole
- Adiwear outsole with Twist Grip
- Upper contains a minimum of 50% recycled content



**GX3937**  
core black/dark silver metallic/impact orange



**GX3938**  
ftwr white/crew navy/crystal white



SOLARMOTION BOA®

MSRP: \$160 WS0069

• Sizes: 7 - 13, 14, 15

- Regular fit
- Micro-adjustable dial-based BOA® Fit System
- Filmed textile and synthetic upper
- Sock-collar opening
- BOOST midsole and Lightstrike cushioning
- Gripmore® rubber outsole
- Upper contains a minimum of 50% recycled content



**GV9388**  
ftwr white/core black/court green



**GV9389**  
core black/dark silver metallic/solar gold



S2G SPIKELESS BOA®

MSRP: \$110 WS0066 • Sizes: 7-13, 14, 15

- Micro-adjustable dial-based BOA® Fit System
- Waterproof textile upper
- Textile lining
- BOUNCE midsole
- Rubber outsole



GV9786  
grey two/ftwr white/grey three



GV9789  
core black/core black/  
grey six

S2G SPIKELESS

MSRP: \$100 WS0006 • Sizes: 7 - 13, 14, 15

- Lace closure
- Textile upper
- Textile lining
- BOUNCE midsole
- Rubber outsole



GV9792 / GZ3880 WIDE  
ftwr white/grey four/grey six



GV9793 / GZ3881 WIDE  
grey four/core black/grey six



GV9794 / GZ3882 WIDE  
altered blue/crew navy/ftwr white





TECH RESPONSE 3.0

MSRP: \$70 WS0024

Sizes: 7 - 13, 14, 15

- Lace closure
- Textile and synthetic upper
- Water-resistant textile and synthetic upper
- Padded collar and tongue
- Textile lining
- BOUNCE midsole
- Six-cleat Traxion outsole
- Upper contains a minimum of 50% recycled content



GV6889 / GV6892 WIDE  
grey four/ftwr white/grey three



GV6888 / GV6891 WIDE  
ftwr white/dark silver metallic/silver met



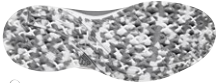
GV6890 / GV6893 WIDE  
core black/core black/ftwr white

TECH RESPONSE SL 3

MSRP: \$70 WS0024

Sizes: 7 - 13, 14, 15

- Lace closure
- Textile and synthetic upper
- Water-resistant textile and synthetic upper
- Padded collar and tongue
- Textile lining
- BOUNCE midsole
- Traxion outsole
- Upper contains a minimum of 50% recycled content



GV6895 / GV6898 WIDE  
grey four/silver met/solar gold



GV6894 / GV6897 WIDE  
ftwr white/core black/grey two



GV6896 / GV6899 WIDE  
core black/core black/ftwr white



S2G MID

MSRP: \$140 WS0048

• Sizes: 7 - 13, 14, 15

- Lace closure
- Mesh upper
- Textile lining
- Four-spike outsole
- Adiwear, Traxion and Thintech TPU outsole



FZ1035  
core black/grey four/mesa



GO-TO SPKL

MSRP: \$160 WS0069

• Sizes: 7 - 13, 14, 15

- Lace closure
- Textile and leather upper
- BOOST midsole
- Rubberized TPU spikelss outsole
- Upper contains a minimum of 50% recycled content



GV6903  
chalk white/alumina/magic  
beige



GV6905  
silver pebble/olive strata/  
silver pebble



H03678  
crew navy/collegiate navy/  
blue fusion



GV6906  
carbon/carbon/grey two



RETROCROSS

MSRP: \$110 WS0066

Sizes: 7 - 13, 14, 15

- Lace closure
- Synthetic and textile upper with toe and heel bumpers
- Textile lining
- Rubberized outsole
- Upper contains a minimum of 50% recycled content



GV6911  
ftwr white/core black/chalk white



GV6912  
ftwr white/court green/  
coral fusion



GV6914  
grey three/crew navy/grey four



JR ZG23

MSRP: \$75 WS0054

Sizes: 1.5-6.5

- Lace closure
- Sprintskein and microfiber-leather upper
- BOUNCE midsole
- Six-cleat Thintech rubber outsole with replaceable soft spikes
- Upper contains a minimum of 50% recycled content



GZ2178  
ftwr white/lucid blue/grey two



GZ2179  
ftwr white/lucid fuchsia/lucid blue





JR CODECHAOS 22 BOA®

MSRP: \$70 WS0024

Sizes: 1.5-6.5

- Regular fit
- Micro-adjustable dial-based BOA® Fit System
- Water-resistant film over textile upper
- Water-resistant
- Slow resilient sockliner
- BOUNCE midsole
- Adiwear outsole with Twist Grip
- Upper contains a minimum of 50% recycled content



**GX3945**  
ftwr white/silver met/grey two



JR S2G SL

MSRP: \$60 WS0063

Sizes: 1.5-6.5

- Lace closure
- Textile upper
- Textile lining
- BOUNCE midsole
- Rubber outsole



**GV9787**  
ftwr white/light purple/grey one



**GV9785**  
ftwr white/grey four/grey six



HYDROPHOBIC TOUR

<b>MSRP: \$45</b> TXM4042S23	<ul style="list-style-type: none"><li>Sizes: OSFM</li><li>87% recycled polyester, 13% elastane dobby</li><li>Waterproof</li><li>Pre-curved brim</li><li>Adjustable snapback closure</li></ul>	<ul style="list-style-type: none"><li>Six-panel construction</li><li>Vented sides and back for breathability</li><li>Hidden stash pocket under crown</li></ul>
---------------------------------	---	--



**HS5590**  
medium grey heather



**HS5591**  
black melange



**IA8068**  
white



**HS5592**  
olive strata mel.

TOUR 3-STRIPES PRINT

<b>MSRP: \$38</b> TXM4049S23	<ul style="list-style-type: none"><li>Sizes: OSFM</li><li>100% recycled polyester plain weave</li><li>Moisture-wicking sweatband</li><li>Pre-curved brim</li><li>Adjustable snapback closure</li></ul>	<ul style="list-style-type: none"><li>Six-panel construction</li><li>Lightweight jacquard fabric</li><li>3D silicone 3-Stripes on front</li></ul>
---------------------------------	--	---



**HS5604**  
white/grey one



**HS5605**  
preloved red



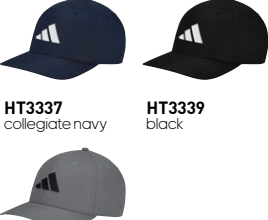
**HS5606**  
collegiate navy

TOUR SNAPBACK

<b>MSRP: \$32</b> TXM4081S23	<ul style="list-style-type: none"><li>Sizes: OSFM</li><li>100% recycled polyester plain weave</li><li>Moisture-wicking sweatband</li><li>Pre-curved brim</li><li>Adjustable snapback closure</li></ul>	<ul style="list-style-type: none"><li>Six-panel construction</li><li>Jacquard fabric</li></ul>
---------------------------------	--	--



**HT3336**  
white



**HT3337**  
collegiate navy



**HT3339**  
black



**HT3338**  
grey three

TOUR PRINT SNAPBACK

<b>MSRP: \$35</b> TXM4053S23	<ul style="list-style-type: none"><li>Sizes: OSFM</li><li>97% recycled polyester, 3% elastane plain weave</li><li>Soft feel</li><li>Pre-curved brim</li><li>Adjustable snapback closure</li></ul>	<ul style="list-style-type: none"><li>Six-panel construction</li></ul>
---------------------------------	---	--



**HS5594**  
collegiate navy



**HS5595**  
grey three

TOUR HAT 3 STRIPE

<b>MSRP: \$38</b> TXM4083S23	<ul style="list-style-type: none"><li>Sizes: OSFM</li><li>100% recycled polyester plain weave</li><li>Moisture-wicking sweatband</li><li>Pre-curved brim</li><li>Adjustable snapback closure</li></ul>	<ul style="list-style-type: none"><li>Six-panel construction</li><li>Lightweight jacquard fabric</li><li>3D silicone 3-Stripes on front</li></ul>
---------------------------------	--	---



**HT3332**  
black



**HT3333**  
collegiate navy



**HT3335**  
white



**HT3334**  
grey three

TOUR VISOR

<b>MSRP: \$25</b> TXM4080S23	<ul style="list-style-type: none"><li>Sizes: OSFM</li><li>84% recycled polyester, 16% elastane ripstop</li><li>Soft, lightweight material</li><li>Pre-curved brim</li><li>Hook-and-loop adjustable back strap</li></ul>
---------------------------------	---



**HT3328**  
white



**HT3329**  
black



**HT3331**  
grey three



**HT3330**  
collegiate navy

GOLF PERFORMANCE HAT

<b>MSRP: \$22</b> TXM4005S22	<ul style="list-style-type: none"><li>Sizes: OSFM</li><li>100% recycled polyester plain weave</li><li>Pre-curved brim</li><li>Adjustable snapback closure</li><li>adidas Badge of Sport Golf logo</li></ul>	<ul style="list-style-type: none"><li>Six-panel construction</li></ul>
---------------------------------	---	--



HA9257  
white



HA9258  
black



HA9260  
grey three



HA9259  
team navy blue



HA9261  
team colleg  
burgundy

SEASON OPENER 23

<b>MSRP: \$38</b> TXM4030S23	<ul style="list-style-type: none"><li>Sizes: OSFM</li><li>97% recycled polyester, 3% elastane plain weave</li><li>Pre-curved brim</li><li>Adjustable snapback closure</li><li>Five-panel construction</li></ul>	<ul style="list-style-type: none"><li>Coral-fusion floral print</li></ul>
---------------------------------	---	---



IA7822  
coral fusion  
Available 4/1

CORD LEATHER 5 PANEL

<b>MSRP: \$35</b> TXM4052S23	<ul style="list-style-type: none"><li>Sizes: OSFM</li><li>Main: 100% cotton corduroy</li><li>Lining: 100% recycled polyester</li><li>Pre-curved brim</li><li>Adjustable back strap with clip</li></ul>	<ul style="list-style-type: none"><li>Five-panel construction</li><li>3D embroidered adidas wordmark</li></ul>
---------------------------------	--	--



HR3604  
hemp



HS5563  
collegiate navy



IB5042  
dark green



HS5564  
white

HEATHER BOS HAT

<b>MSRP: \$28</b> TXM4001S22	<ul style="list-style-type: none"><li>Sizes: OSFM</li><li>86% recycled polyester, 14% elastane plain weave</li><li>Pre-curved brim</li><li>Adjustable snapback closure</li><li>adidas Badge of Sport Golf logo</li></ul>	<ul style="list-style-type: none"><li>Six-panel construction</li></ul>
---------------------------------	--	--



HA9196  
grey three mel



HA9198  
black melange



HS5500  
collegiate navy

RAIN.RDY BUCKET

<b>MSRP: \$42</b> TXM1262S22	<ul style="list-style-type: none"><li>Sizes: OSFM</li><li>Embroidered felt patch front</li><li>Panel construction</li><li>Snapback closure</li><li>Five-panel construction</li></ul>	<ul style="list-style-type: none"><li>Contains a minimum of 25% recycled content</li></ul>
---------------------------------	--	--



HM4388  
black

REVOLVE HAT

<b>MSRP: \$28</b> TXM4050S23	<ul style="list-style-type: none"><li>Sizes: OSFM</li><li>100% cotton twill</li><li>Pre-curved brim</li><li>Adjustable snapback closure</li><li>Six-panel construction</li></ul>	<ul style="list-style-type: none"><li>Supports the Better Cotton Initiative</li></ul>
---------------------------------	--	---



HS5587  
pink strata



HS5588  
collegiate navy



HZ4314  
coral fusion



HS5589  
black

NO SLOW PLAY

- MSRP: \$30**  
TXM4046S23

  - Sizes: OSFM
  - 100% cotton twill
  - 3D embroidered patch on front
  - Pre-curved brim
  - Adjustable snapback closure
- Six-panel construction
  - Supports the Better Cotton Initiative



CLUBHOUSE HAT

- MSRP: \$32**  
TXM4045S23

  - Sizes: OSFM
  - 100% cotton twill
  - Pre-curved brim
  - Adjustable snapback closure
  - Six-panel construction
- Faux leather patch on front
  - Supports the Better Cotton Initiative



GOLF LO PRO TRUCKER

- MSRP: \$30**  
TXM4054S23

  - Sizes: OSFM
  - 86% recycled polyester, 14% elastane plain weave
  - Embroidered patch logo on front
  - Pre-curved brim
  - Adjustable snapback closure
- Mesh sides and back
  - Six-panel construction



RETRO 5 PANEL

- MSRP: \$32**  
TXM4048S23

  - Sizes: OSFM
  - 97% recycled polyester, 3% elastane plain weave
  - Lightweight fabric
  - Adjustable snapback closure
  - Shallow crown
- Five-panel construction



2 IN 1 HAT REMOVABLE

- MSRP: \$35**  
TXM4056S23

  - Sizes: OSFM
  - 86% recycled polyester, 14% elastane plain weave
  - Pre-curved brim
  - Adjustable snapback closure
  - Mesh sides and back
- Six-panel construction
  - Removable patch



M BUCKET REVERSIBLE

- MSRP: \$45**  
TXM4051S23

  - Sizes: OSFM
  - 100% cotton twill
  - All-around brim
  - Classic bucket shape
  - Reversible
- Supports the Better Cotton Initiative





WIDE BRIM HAT

- MSRP: \$42

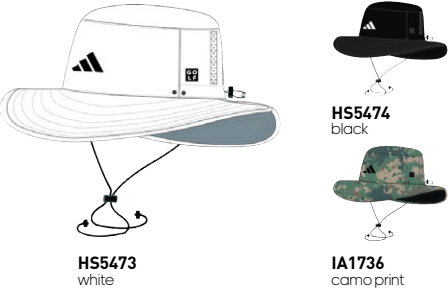
TXM4058523
- Sizes: S/M, L/XL

100% recycled polyester dobby

Moisture-absorbing AEROREADY

All-around brim

Drawcord with toggle under chin
- 3-Stripes ventilation on back



ROPE 5 PANEL CRESTABLE

- MSRP: \$28

TXM1250F21CRST
- Sizes: OSFM

97% recycled polyester, 3% elastane plain weave

Pre-curved brim

Snapback closure

Contrast rope detail
- Five-panel construction

PRIMEGREEN



TOUR SNAP CRESTABLE

- MSRP: \$32

TXM4081523CRST
- Sizes: OSFM

100% recycled polyester plain weave

Moisture-wicking sweatband

Pre-curved brim

Adjustable snapback closure
- Six-panel construction



GOLF LO PRO TRUCKER CRESTABLE

- MSRP: \$30

TXM4054523CRST
- Sizes: OSFM

86% recycled polyester, 14% elastane plain weave

Pre-curved brim

Adjustable snapback closure

Six-panel construction



HEATHER BOS CRESTABLE

- MSRP: \$28

TXM4001522CRST
- Sizes: OSFM

86% recycled polyester, 14% elastane plain weave

Pre-curved brim

Adjustable snapback closure

Six-panel construction
- PRIMEGREEN



GOLF PERFORMANCE CRESTABLE

- MSRP: \$22

TXM4005522CRST
- Sizes: OSFM

100% recycled polyester plain weave

Pre-curved brim

Adjustable snapback closure

Six-panel construction



RELAXED CRESTABLE HAT

<b>MSRP: \$20</b> TXM4010S22CRST	<ul style="list-style-type: none"><li>Sizes: OSFM</li><li>100% polyester dobby</li><li>Pre-curved hem</li><li>Stretchy hook-and-loop adjustable back strap</li><li>Six-panel relaxed construction</li></ul>
-------------------------------------	---



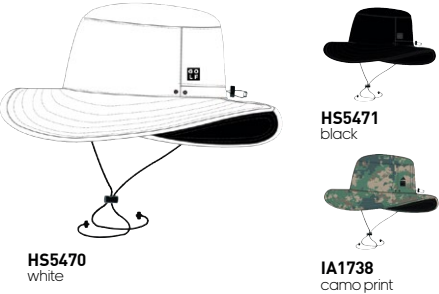
TOUR VISOR CRESTABLE

<b>MSRP: \$25</b> TXM4080S23CRST	<ul style="list-style-type: none"><li>Sizes: OSFM</li><li>84% recycled polyester, 16% elastane ripstop</li><li>Soft, lightweight material</li><li>Pre-curved brim</li><li>Hook-and-loop adjustable back strap</li></ul>
-------------------------------------	---



WIDE BRIM CRESTABLE

<b>MSRP: \$42</b> TXM4058S23CRST	<ul style="list-style-type: none"><li>Sizes: S/M, L/XL</li><li>100% recycled polyester dobby</li><li>Moisture-absorbing AEROREADY</li><li>All-around brim</li><li>Drawcord with toggle under chin</li></ul>	<ul style="list-style-type: none"><li>3-Stripes ventilation on back</li></ul>
-------------------------------------	---	---



TROPHY TOUR BELT

<b>MSRP: \$60</b> TXM2076S23	<ul style="list-style-type: none"><li>Sizes: OSFM</li><li>Dimensions: 1.5" x 48"</li><li>100% polyurethane imitation leather</li><li>Brushed silver metal buckle with raised 3-Stripes</li><li>Reversible: white and color option</li></ul>	<ul style="list-style-type: none"><li>Cut-to-size</li><li>Contains a minimum of 25% recycled content</li></ul>
---------------------------------	---	--



HS5573  
black



HS5575  
grey three

HEATHER STRETCH REVERSIBLE BELT

<b>MSRP: \$40</b> TXM2075S23	<ul style="list-style-type: none"><li>Sizes: OSFM</li><li>Dimensions: 1.5" x 48"</li><li>60% recycled polyester, 40% rubber jacquard</li><li>Adjustable clamp closure</li><li>Cut-to-size</li></ul>	<ul style="list-style-type: none"><li>Reversible: heathered fabric on one side, herringbone on the other</li></ul>
---------------------------------	---	--



HS5552  
black



HS5553  
collegiate navy



IA1759  
grey

BRAIDED STRETCH BELT

<b>MSRP: \$42</b> TXM2077S23	<ul style="list-style-type: none"><li>Sizes: S/M, M/L, L/XL</li><li>Dimensions: 1.5" x 43" [size M/L]</li><li>70% recycled polyester, 30% rubber non-woven</li><li>Metal pin buckle</li><li>Braided stretch material</li></ul>
---------------------------------	--



HS5558  
collegiate navy



HS5560  
black



HS5559  
hemp



HZ4311  
grey three

REVERSIBLE WEB BELT

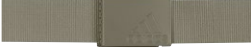
<b>MSRP: \$22</b> TXM4003S22	<ul style="list-style-type: none"><li>Sizes: OSFM</li><li>Dimensions: 1.5" x 48"</li><li>100% recycled polyester plain weave</li><li>Adjustable clamp closure with raised adidas Badge of Sport</li></ul>	<ul style="list-style-type: none"><li>Reversible strap</li><li>Cut-to-size customization</li></ul>
---------------------------------	---	--



HA9186  
black



HA9188  
grey three



HT7744  
olive strata/hemp

TOUR LOWCUT		
<b>MSRP: \$15</b> TXM4077S23	<ul style="list-style-type: none"> <li>Sizes: 7-8.5   9-12   12.5-15</li> <li>No-show length</li> <li>65% recycled nylon, 30% recycled polyester, 5% elastane</li> <li>Breathable, quick-dry fabric</li> </ul>	<ul style="list-style-type: none"> <li>Adaptive-fit Alphaskin</li> <li>Padded toe and heel</li> <li>Ventilated top of foot</li> <li>Grippy, anti-blister yarn footbed</li> <li>Silicone, no-slip grip at back of heel</li> </ul>



**HS5555**  
 black

**HS5556**  
 white

BASIC LOWCUT		
<b>MSRP: \$8</b> TXM4070S23	<ul style="list-style-type: none"> <li>Sizes: 7-8.5   9-12   12.5-15</li> <li>No-show length</li> <li>64% cotton, 31% recycled polyester, 4% elastane, 1% recycled nylon</li> <li>Mesh on top of foot</li> </ul>	<ul style="list-style-type: none"> <li>Compression instep</li> <li>Silicon grip on heel for no slip fit</li> </ul>



**HS5569**  
 white

**HS5570**  
 black

6 PACK LOWCUT		
<b>MSRP: \$28</b> TXM4076S23	<ul style="list-style-type: none"> <li>Sizes: 7-8.5   9-12   12.5-15</li> <li>No-show length</li> <li>64% cotton, 31% recycled polyester, 4% elastane, 1% recycled nylon</li> <li>Six pairs per pack</li> </ul>	<ul style="list-style-type: none"> <li>Mesh on top of foot</li> <li>Compression instep</li> </ul>



**HS6062**  
 white

TOUR ANKLE		
<b>MSRP: \$16</b> TXM4078S23	<ul style="list-style-type: none"> <li>Sizes: 7-8.5   9-12   12.5-15</li> <li>Ankle length</li> <li>60% recycled nylon, 35% recycled polyester, 5% elastane</li> <li>Breathable, quick-dry fabric</li> </ul>	<ul style="list-style-type: none"> <li>Adaptive-fit Alphaskin</li> <li>Padded toe and heel</li> <li>Ventilated top of foot</li> <li>Grippy, anti-blister yarn footbed</li> </ul>



**HS5537**  
 black

**HS5538**  
 white

3 PACK LOWCUT		
<b>MSRP: \$18</b> TXM4073S23	<ul style="list-style-type: none"> <li>Sizes: 7-8.5   9-12   12.5-15</li> <li>No-show length</li> <li>64% cotton, 31% recycled polyester, 4% elastane, 1% recycled nylon</li> <li>Three pairs per pack</li> </ul>	<ul style="list-style-type: none"> <li>Mesh on top of foot</li> <li>Compression instep</li> </ul>



**HS5576**  
 multicolor

**HS5577**  
 white

BASIC ANKLE		
<b>MSRP: \$8</b> TXM4071S23	<ul style="list-style-type: none"> <li>Sizes: 7-8.5   9-12   12.5-15</li> <li>Ankle length</li> <li>64% cotton, 31% recycled polyester, 4% elastane, 1% recycled nylon</li> <li>Mesh on top of foot</li> </ul>	<ul style="list-style-type: none"> <li>Compression instep</li> <li>Jacquard stripes</li> </ul>



**HS5542**  
 white

**HS5543**  
 black



3 PACK ANKLE

<b>MSRP: \$18</b> TXM4074S23	<ul style="list-style-type: none"><li>Sizes: 7-8.5   9-12   12.5-15</li><li>Ankle length</li><li>64% cotton, 31% recycled polyester, 4% elastane, 1% recycled nylon</li><li>Three pairs per pack</li></ul>	<ul style="list-style-type: none"><li>Mesh on top of foot</li><li>Compression instep</li><li>Jacquard stripes</li></ul>
---------------------------------	--	---



**HS5571**  
multicolor



**HS5572**  
white

3 PACK CREW

<b>MSRP: \$22</b> TXM4075S23	<ul style="list-style-type: none"><li>Sizes: 7-8.5   9-12   12.5-15</li><li>Crew length</li><li>59% cotton, 35% recycled polyester, 5% elastane, 1% recycled nylon</li><li>Three pairs per pack</li></ul>	<ul style="list-style-type: none"><li>Mesh on top of foot</li><li>Compression instep</li><li>Jacquard stripes</li></ul>
---------------------------------	---	---



**HS6060**  
multicolor



**HS6061**  
white

BASIC CREW

<b>MSRP: \$10</b> TXM4072S23	<ul style="list-style-type: none"><li>Sizes: 7-8.5   9-12   12.5-15</li><li>Crew length</li><li>59% cotton, 35% recycled polyester, 5% elastane, 1% recycled nylon</li><li>Mesh on top of foot</li></ul>	<ul style="list-style-type: none"><li>Compression instep</li><li>Jacquard stripes</li></ul>
---------------------------------	--	---



**HS5545**  
white



**HS5546**  
black

PRINTED CREW SOCK

<b>MSRP: \$16</b> TXM4079S23	<ul style="list-style-type: none"><li>Sizes: 7-8.5   9-12   12.5-15</li><li>Crew length</li><li>68% recycled polyester, 27% cotton, 4% elastane, 1% recycled nylon</li><li>Adaptive-fit Alphaskin</li></ul>	<ul style="list-style-type: none"><li>Padded toe and heel</li><li>Ventilated top of foot</li><li>Grip yarn footbed</li></ul>
---------------------------------	---	--



**HS5540**  
coral fusion  
Available 4/1



**IA2694**  
grey

NECK GAITER		
<b>MSRP: \$25</b> TXM6070S22	<ul style="list-style-type: none"> <li>Sizes: OSFM</li> <li>74% recycled polyester, 19% cotton, 7% elastane single jersey</li> <li>Top and bottom cuffs</li> </ul>	<ul style="list-style-type: none"> <li>adidas Badge of Sport logo</li> <li>UV 50+ factor</li> </ul>



HD4807

grey three

HS5518

collegiate navy

DOUBLE CANOPY 64 INCH UMBRELLA		
<b>MSRP: \$55</b> HNK24	<ul style="list-style-type: none"> <li>Oversized coverage</li> <li>Recycled canopy (RPET)</li> <li>Automatic open</li> <li>Ergonomic handle-rubber coated for non-slip grip</li> </ul>	<ul style="list-style-type: none"> <li>Nanoskin water repellency</li> </ul>



FZ8889

black

RESORT TOWEL	
<b>MSRP: \$32</b> TXM6074S22	<ul style="list-style-type: none"> <li>Dimensions: 28" x 55"</li> <li>100% cotton towel</li> <li>Super-absorbent</li> <li>adidas Badge of Sport Golf logo</li> <li>Better Cotton Initiative</li> </ul>



HA9185

black

COMPACT AUTO OPEN UMBRELLA		
<b>MSRP: \$35</b> HNK22	<ul style="list-style-type: none"> <li>Fold down to compact size</li> <li>43" Vented Recycled canopy (RPET)</li> <li>Automatic open</li> <li>Nanoskin water repellency</li> </ul>	<ul style="list-style-type: none"> <li>Ergonomic handle-rubber coated for non-slip grip</li> </ul>



FZ8887

black

CART TOWEL		
<b>MSRP: \$20</b> TXM6072S22	<ul style="list-style-type: none"> <li>Dimensions: 12" x 12"</li> <li>100% polyester towel</li> <li>Waffle texture</li> <li>Super-absorbent</li> <li>Carabiner on corner</li> </ul>	<ul style="list-style-type: none"> <li>adidas Badge of Sport Golf logo</li> </ul>



HA9178

black

THINTECH CLEAT 23		
<b>MSRP: \$20</b> S23ADIFTWCLT20	<ul style="list-style-type: none"> <li>Green Friendly, increased leg deflection angles for less green disruption</li> <li>PINS IV system - at 3.5mm, thintech EXP is the lowest</li> </ul>	<ul style="list-style-type: none"> <li>to-the-ground attachment system in the industry</li> <li>Lightweight - PINS IV system and thintech EXP cleat design, provides 15% lighter system</li> </ul>



IA6409

white

IA6410

black

SINGLE CANOPY 60 INCH UMBRELLA		
<b>MSRP: \$38</b> HNK23	<ul style="list-style-type: none"> <li>Vented Vortex Technology</li> <li>Recycled canopy (RPET)</li> <li>Automatic open</li> <li>Ergonomic handle-rubber coated for non-slip grip</li> </ul>	<ul style="list-style-type: none"> <li>Nanoskin water repellency</li> </ul>



FZ8888

black

PLAYERSTOWEL		
<b>MSRP: \$28</b> TXM6073S22	<ul style="list-style-type: none"> <li>Dimensions: 16" x 30"</li> <li>100% polyester towel</li> <li>Waffle texture</li> <li>Super-absorbent</li> <li>Loop on top center</li> </ul>	<ul style="list-style-type: none"> <li>adidas Badge of Sport Golf logo</li> </ul>



HA9175

black

HYBRID BACKPACK

<b>MSRP: \$130</b> TXM6080F22	<ul style="list-style-type: none"><li>• 100% recycled polyester plain weave</li><li>• Adjustable, contoured shoulder straps</li><li>• Inner mesh zip pocket and organizer</li></ul>	<ul style="list-style-type: none"><li>• Trolley strap slips onto a carry-on</li><li>• Top and side carry handles</li><li>• Two front zip pockets, two side zip pockets, water bottle pocket and deeper slip-in front pocket</li></ul>	<ul style="list-style-type: none"><li>• Easy-access Sherpa-lined external laptop sleeve plus inner laptop sleeve</li></ul>
----------------------------------	---	---	--



HC6171  
grey five

HYBRID DUFFLE

<b>MSRP: \$80</b> TXM6083F22	<ul style="list-style-type: none"><li>• Dimensions: 26.75" x 15.75" x 11.75"</li><li>• 100% recycled polyester plain weave</li><li>• Vented shoe pocket with exterior zipper</li></ul>	<ul style="list-style-type: none"><li>• Zip main compartment with mesh end pocket</li><li>• Zip mesh pocket on inner lid</li><li>• Contoured, adjustable and removable shoulder straps</li></ul>	<ul style="list-style-type: none"><li>• Dual carry handles</li></ul>
---------------------------------	--	--	--



HC6180  
grey five

COOLER BAG

<b>MSRP: \$38</b> TXM6082F22	<ul style="list-style-type: none"><li>• Dimensions: 11.5" x 7.5" x 8"</li><li>• 100% recycled polyester plain weave</li><li>• Top loader with zip closure</li><li>• Adjustable shoulder strap</li></ul>	<ul style="list-style-type: none"><li>• Cooling lining material</li></ul>
---------------------------------	---	---



HC6181  
grey five

SHOE BAG

<b>MSRP: \$25</b> TXM6081F22	<ul style="list-style-type: none"><li>• Dimensions: 9/25" x 5" x 14"</li><li>• 100% recycled polyester plain weave</li><li>• Front zip pocket</li><li>• Easy-grab carry handle on top</li></ul>
---------------------------------	---



HC6172  
grey five

VALUABLES POUCH

<b>MSRP: \$25</b> TXM6085F22	<ul style="list-style-type: none"><li>• Dimensions: 8" x 11.5"</li><li>• 100% recycled polyester plain weave</li><li>• Carry handle</li><li>• Divider and zipper pocket</li></ul>	<ul style="list-style-type: none"><li>• Drawcord closure can be used as shoulder straps</li></ul>
---------------------------------	---	---



HC6177  
grey five

AG PACKABLE BACKPACK

<b>MSRP: \$30</b> TXM6086S23	<ul style="list-style-type: none"><li>• Dimensions: 19" x 11" x 8"</li><li>• Volume: 35 L</li><li>• 100% recycled polyester ripstop</li><li>• Zip closure</li><li>• Front zip pocket</li></ul>	<ul style="list-style-type: none"><li>• Hideaway adjustable shoulder strap</li><li>• Packable into small pouch</li><li>• Top carry handle</li></ul>
---------------------------------	--	---



HS5586  
black

Y NOVELTY HAT

**MSRP: \$25**  
TXB1050S23

- Sizes: OSFY
- 100% cotton twill
- Pre-curved brim
- Adjustable snapback closure
- Five-panel construction with shallow crown



**HS5547**  
white



**HS5548**  
court green

Y PERFORMANCE BLANK HAT

**MSRP: \$15**  
TXB1045S22B

- Sizes: OSFY
- 100% recycled polyester plain weave
- Pre-curved brim
- Adjustable snapback closure
- adidas Badge of Sport logo

- Six-panel construction



**H57139**  
black



**H57140**  
white



**HT7764**  
collegiate navy

Y PERFORMANCE BRAND HAT

**MSRP: \$18**  
TXB1045S22

- Sizes: OSFY
- 100% cotton twill
- Pre-curved brim
- Adjustable snapback closure
- Five-panel construction with shallow crown



**H57147**  
black



**H57148**  
white



**HT7761**  
collegiate navy

UNIVERSAL REVERSIBLE WEB BELT

**MSRP: \$20**  
TXB1047S22

- Sizes: OSFM
- One size fits most
- 100% recycled polyester plain weave
- Adjustable clamp closure with embossed adidas Badge of Sport

- Gray and white reversible strap
- Cut-to-size customization



**H57143**  
white

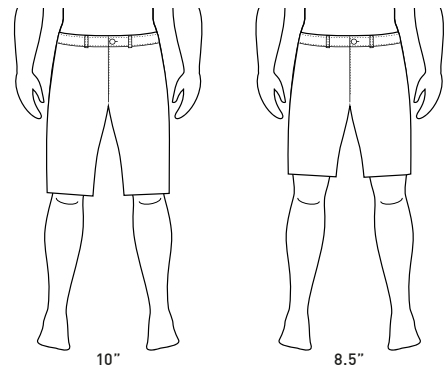


MENS APPAREL SIZING

	XS	S	M	L	XL	XXL
SIZE	30/32	34/36	38/40	42/44	46/48	50/52
CHEST	31-33"	34-37"	37-40"	40-44"	44-48"	48-52"
WAIST	27-29"	30-32"	32-35"	35-39"	39-43"	43-47"
HIP	32-34"	35-37"	37-40"	40-44"	44-48"	48-51"

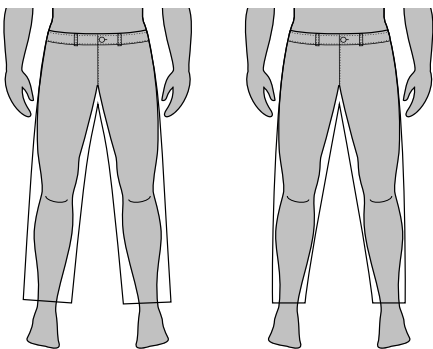
MENS SHORTS LENGTH

BASED ON 6 FOOT MODEL



MENS PANT FIT GUIDE

REGULAR                      TAPERED



BOYS APPAREL SIZING

	XS	S	M	L	XL
AGE	7-8YR	9-10YR	11-12YR	13-14YR	15-16YR
NUMERIC SIZE	128	140	152	168	176
HEIGHT	50.5-53"	54-57"	58-62"	63-67"	68-69"
CHEST	25-26.5"	27-29.5"	30-32.5"	33-35"	35.5-36"
WAIST	22.5-24"	24.5-26"	26.5-28"	28.5-29.5"	29.5-30"
HIP	26-28"	28.5-30.5"	31-33.5"	34-36"	36-37"
INSEAM	23-24.5"	25.5-26.5"	27-29"	30-31"	31.5-32"

GIRLS APPAREL SIZING

	XS	S	M	L	XL
AGE	7-8YR	9-10YR	11-12YR	13-14YR	15-16YR
NUMERIC SIZE	128	140	152	168	170
HEIGHT	50.5-53"	54-57"	58-62"	63-64.5"	65-67"
CHEST	25.5-27.5"	28-29.5"	30-31.5"	32-33"	33.5-34.5"
WAIST	22.5-23.5"	24-25"	25.5-26"	26.5-27"	27.5-28"
HIP	27.5-29"	30-31.5"	32-33.5"	34-35"	35.5-36.5"
INSEAM	23.5-24.5"	25.5-27"	28-29"	29.5-30.5"	31-32"

MENS HAT SIZE CHART

INCH	55	56	57	58	59	60
	21 1/2	21 7/8	22 1/4	22 5/8	23	23 1/2
STRETCH FITTED HATS	S/M					
				L/XL		
ADJUSTABLE HATS						
	ONE SIZE FITS MOST					

---

## SHORTS

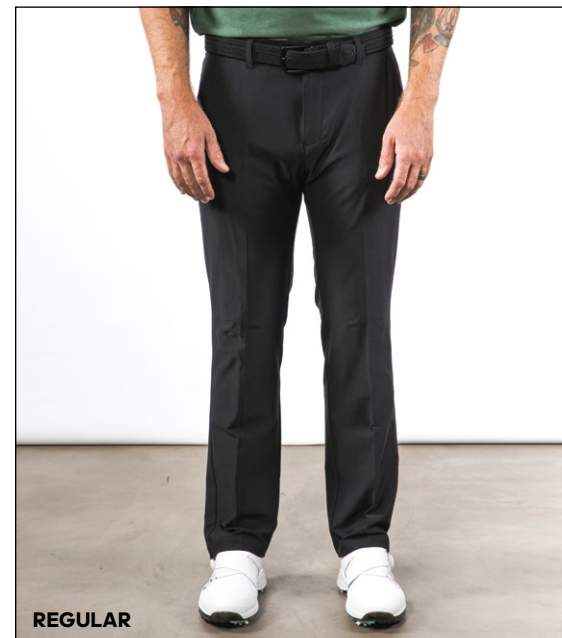
---



---

## PANT

---



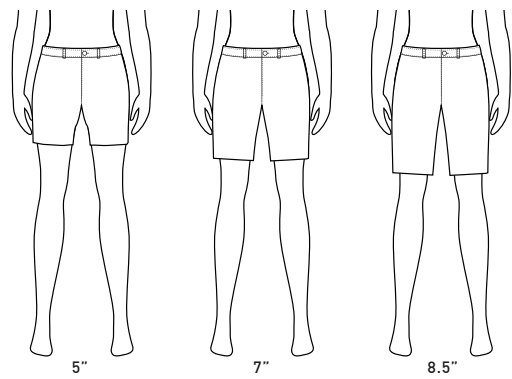
MODEL IS 6'2"AND WEARING SIZE M

WOMENS APPAREL SIZE CHART

	XS	S	M	L	XL	XXL
US SIZING	0-2	4-6	8-10	12-14	16-18	20-22
CHEST	31-33"	33.5-35"	35.5-38"	38.5-41"	41.5-44"	44.5-47"
WAIST	22.5-25"	25.5-27.5"	28-30"	30.5-33"	33.5-36"	36.5-41.5"
HIP	33-35"	35.5-37.5"	38-40.5"	41-43.5"	44-46.6"	47-49.5"
INSEAM	30"	30.5"	31"	31.5"	32"	32.5"

WOMENS SHORTS LENGTH

BASED ON 5'8" FOOT MODEL



WOMENS SKORT FIT GUIDE

BASED ON 5'8" FOOT MODEL

